



Crossing continents & seas to bring you the best deal



AFRICA



INDIA



EUROPE



ASIA



MIDDLE-EAST

December 2024



Inhoudsopgave

Available products 06 December 2024	3
Fish	3
Shrimps	19
Crab	23
Squid	24
Cuttlefish	25
Octopus	26
Shellfish	27
Meat	28
Poultry	30
Leafy greens	33
Fruit	36
Pods and Beans	37
Roots and Tubers	39
Cereals	41
Snacks	43
Other	46



1028 Barracuda WR 200-500 g 10 kg
- SU

Species: :Sphyræna jello

Price per SU / KG / CU

1 = € 26,50 = € 2,65 = € 26,50



1029 JONA Barracuda WR 300-500
gr 1 x 10 kg IQF/IWP-IN

Species: :Sphyræna jello

Price per SU / KG / CU

1 = € 28,50 = € 2,85 = € 28,50



1029.2 JONA Barracuda WR 300-500
gr 1 x 10 kg IQF/IWP 10% -...

Species: :Sphyræna Spp

Price per SU / KG / CU

1 = € 27,50 = € 2,75 = € 27,50



1029.3 Jona Baby Barracuda WR
50-150 gr 5 x 2 kg 10% -VN

Species: :Sphyræna Spp.

Price per SU / KG / CU

1 = € 22,90 = € 2,29 = € 4,58

3 = € 20,90 = € 2,09 = € 4,18 = -9%

10 = € 19,90 = € 1,99 = € 3,98 = -13%

55 = € 18,90 = € 1,89 = € 3,78 = -17%

FROM € 1,89 PER KG!



1031 JONA Barracuda WR 500-1000
gr 1 x 10 kg IQF/IWP-IN

Species: :Sphyræna jello

Price per SU / KG / CU

1 = € 32,50 = € 3,25 = € 32,50

3 = € 31,50 = € 3,15 = € 31,50 = -3%

10 = € 30,50 = € 3,05 = € 30,50 = -6%

40 = € 27,50 = € 2,75 = € 27,50 = -15%

80 = € 26,50 = € 2,65 = € 26,50 = -18%

FROM € 2,65 PER KG!



1042.1 Jona Barracuda WR 5000 gr
up 1 x 25 kg IQF/IWP-IN

Species: :Sphyræna jello

Price per SU / KG / CU

1 = € 78,50 = € 3,14



1047-001 Jona Boal WG 1-2kg IWP 1
x 20kg 10% -IN

Species: :Wallago attu

Price per SU / KG / CU

1 = € 70,00 = € 3,50 = € 70,00



1047-002 Jona Boal WG 1-2kg IWP 1
x 21kg 10% -IN

Species: :Wallago attu

Price per SU / KG / CU

1 = € 73,50 = € 3,50 = € 73,50

3 = € 69,30 = € 3,30 = € 69,30 = -6%

10 = € 67,20 = € 3,20 = € 67,20 = -9%

24 = € 65,10 = € 3,10 = € 65,10 = -11%

FROM € 3,10 PER KG!



1048-001 Jona Boal WG 2-3kg IWP 1
x 20kg 10% -IN

Species: :Wallago attu

Price per SU / KG / CU

1 = € 79,00 = € 3,95 = € 79,00

3 = € 77,00 = € 3,85 = € 77,00 = -3%

10 = € 75,00 = € 3,75 = € 75,00 = -5%

24 = € 74,00 = € 3,70 = € 74,00 = -6%

FROM € 3,70 PER KG!



1048-002 Jona Boal WG 2-3kg IWP 1
x 21kg 10% -IN

Species: :Wallago attu

Price per SU / KG / CU

1 = € 82,95 = € 3,95 = € 82,95



1048-003 Jona Boal WG 2-3kg IWP 1
x 22kg 10% -IN

Species: :Wallago attu

Price per SU / KG / CU

1 = € 86,90 = € 3,95 = € 86,90



1049-001 Jona Boal WG 3-4kg IWP 1
x 20kg 10% -IN

Species: :Wallago attu

Price per SU / KG / CU

1 = € 83,00 = € 4,15 = € 83,00
3 = € 79,00 = € 3,95 = € 79,00 = -5%
10 = € 77,00 = € 3,85 = € 77,00 = -7%
24 = € 75,00 = € 3,75 = € 75,00 = -10%

FROM € 3,75 PER KG!



1049-002 Jona Boal WG 3-4kg IWP 1
x 21kg 10% -IN

Species: :Wallago attu

Price per SU / KG / CU

1 = € 87,15 = € 4,15



1049-003 Jona Boal WG 3-4kg IWP 1
x 22kg 10% -IN

Species: :Wallago attu

Price per SU / KG / CU

1 = € 91,30 = € 4,15 = € 91,30



1049-004 Jona Boal WG 3-4kg IWP 1
x 23kg 10% -IN

Species: :Wallago attu

Price per SU / KG / CU

1 = € 95,45 = € 4,15 = € 95,45



1050-001 Jona Boal WG 4-5kg IWP 1
x 20kg 10% -IN

Species: :Wallago attu

Price per SU / KG / CU

1 = € 86,00 = € 4,30 = € 86,00



1050-003 Jona Boal WG 4-5kg IWP 1
x 22kg 10% -IN

Species: :Wallago attu

Price per SU / KG / CU

1 = € 94,60 = € 4,30



1073-003 Dorade/Seabream WGS
200-300g IQF 1 x5kg 25% -TR

Species: :Sparus aurata

Price per SU / KG / CU

1 = € 32,50 = € 6,50



1100-005 Sea Catfish (Barbaman) WR
200-500g 1x 20kg -SR

Species: :Bagre Bagre

Price per SU / KG / CU

1 = € 28,00 = € 1,40 = € 28,00

3 = € 27,00 = € 1,35 = € 27,00 = -4%

10 = € 26,00 = € 1,30 = € 26,00 = -7%

44 = € 25,00 = € 1,25 = € 25,00 = -11%

132 = € 24,00 = € 1,20 = € 24,00 = -14%

FROM € 1,20 PER KG!



1101-001 Jona Catfish WG 300-500g
IPB 1 x 4kg 20% -ID

Species: :Clarias Fuscus

Price per SU / KG / CU

1 = € 11,00 = € 2,75 = € 11,00



1109.1 Jona Ceylon
Chooperai/Yellowstr. Trev WR 50 gr+ 1
X ...

Species: :Selaroides Leptolepsis

Price per SU / KG / CU

1 = € 27,50 = € 2,75 = € 2,75

3 = € 25,50 = € 2,55 = € 2,55 = -7%

10 = € 23,50 = € 2,35 = € 2,35 = -15%

FROM € 2,35 PER KG!



1113-001 Jona Chooperai WR 10/20
IQF 10 x 1kg 10% -IN

Species: :Selaroides Leptolepsis

Price per SU / KG / CU

1 = € 26,50 = € 2,65 = € 2,65

10 = € 25,50 = € 2,55 = € 2,55 = -4%

20 = € 24,50 = € 2,45 = € 2,45 = -8%

60 = € 23,50 = € 2,35 = € 2,35 = -11%

180 = € 22,50 = € 2,25 = € 2,25 = -15%

FROM € 2,25 PER KG!



1113-002 Jona Chooperai WR 20/40
IQF 10 x 1kg 10% -IN

Species: :Selaroides Leptolepsis

Price per SU / KG / CU

1 = € 23,50 = € 2,35 = € 2,35

10 = € 22,50 = € 2,25 = € 2,25 = -4%

20 = € 21,50 = € 2,15 = € 2,15 = -9%

60 = € 20,50 = € 2,05 = € 2,05 = -13%

180 = € 19,50 = € 1,95 = € 1,95 = -17%

FROM € 1,95 PER KG!



1113.1 Chooperai/Yellowstripe
trevally WR 40/50 10x1 Kg IQF...

Species: :Selaroides Leptolepsis

Price per SU / KG / CU

1 = € 19,50 = € 1,95 = € 1,95

10 = € 18,50 = € 1,85 = € 1,85 = -5%

20 = € 17,50 = € 1,75 = € 1,75 = -10%

60 = € 16,50 = € 1,65 = € 1,65 = -15%

180 = € 15,50 = € 1,55 = € 1,55 = -21%

FROM € 1,55 PER KG!



1125 Catla Gutted IWP 5 kg+ 22 kg
-MM

Species: :Catla Catla

Price per SU / KG / CU

1 = € 60,50 = € 2,75 = € 60,50

3 = € 57,20 = € 2,60 = € 57,20 = -5%

10 = € 55,00 = € 2,50 = € 55,00 = -9%

FROM € 2,50 PER KG!



1125.1 Catla Gutted IWP 5 kg+ 24 kg
-MM

Species: :Catla Catla

Price per SU / KG / CU

1 = € 66,00 = € 2,75 = € 66,00



1125.7 Catla Gutted IWP 5 kg+ 27 kg
-MM

Species: :Catla Catla

Price per SU / KG / CU

1 = € 68,75 = € 2,75 = € 68,75



1127 Catla Gutted IWP 7 +Kg 22 kg
-MM

Species: :Catla Catla
Price per SU / KG / CU
1 = € 68,20 = €3,10 = €68,20



1130 Catla Gutted IWP 7 +Kg 24 Kg
-MM

Species: :Catla Catla
Price per SU / KG / CU
1 = € 70,80 = €2,95 = €70,80
3 = € 67,20 = €2,80 = €67,20 = -5%
10 = € 63,60 = €2,65 = €63,60 = -10%

FROM €2,65 PER KG!



1130.2 Catla Gutted IWP 7 +Kg 27 Kg
-MM

Species: :Catla Catla
Price per SU / KG / CU
1 = € 70,80 = €2,95



1232 Hilsa Whole round IWP IQF
300/500 gr 1 x 10 Kg-IN

Species: :Tenualosa Ilisha x Tenualosa
Toli
Price per SU / KG / CU
1 = € 35,90 = €3,59 = €35,90
3 = € 33,90 = €3,39 = €33,90 = -6%
10 = € 31,90 = €3,19 = €31,90 = -11%
80 = € 29,90 = €2,99 = €29,90 = -17%
240 = € 27,90 = €2,79 = €27,90 = -22%

FROM €2,79 PER KG!



1245-102 Jack/Horse Mackerel WR
300-500g Block 1 x 20kg -CL

Species: :Trachurus Murphy
Price per SU / KG / CU
1 = € 35,80 = €1,79 = €35,80
3 = € 33,80 = €1,69 = €33,80 = -6%
10 = € 31,80 = €1,59 = €31,80 = -11%
20 = € 29,80 = €1,49 = €29,80 = -17%
65 = € 28,80 = €1,44 = €28,80 = -20%
195 = € 27,80 = €1,39 = €27,80 = -22%

FROM €1,39 PER KG!



1258-001 Horse Mackerel WR 350g-
UP Block 1 x 20kg -GB

Species: :Trachurus Trachurus
Price per SU / KG / CU
1 = € 59,80 = €2,99 = €59,80



1265.1 Indische horsmakreel /
Torpedo horsmakreel 2-3 stuks...

Species: :Megalaspis cordyla
Price per SU / KG / CU
1 = € 17,90 = €1,79 = €1,79
3 = € 16,90 = €1,69 = €1,69 = -6%
10 = € 15,90 = €1,59 = €1,59 = -11%
52 = € 14,90 = €1,49 = €1,49 = -17%
156 = € 13,90 = €1,39 = €1,39 = -22%

FROM €1,39 PER KG!



1285-004 Ocean Delight Kingfish WG
375-900g IQF 1 x 10kg -SR

Species: :Scomberomorus brasiliensis
Price per SU / KG / CU
1 = € 35,00 = €3,50 = €35,00



1285.2 JONA Kingfish
(Scomberomorus Spp) WG 400-900 g
10 kg...

Species: :Scomberomorus Spp
Price per SU / KG / CU
1 = € 34,50 = €3,45 = €34,50



1290-001 Jona Kingfish WG 1-2kg
IPB 1 x 20kg 5% -SR

Species: :Scomberomorus cavalla

Price per SU / KG / CU

1 = € 78,00 = €3,90 = €78,00

3 = € 77,00 = €3,85 = €77,00 = -1%

10 = € 75,00 = €3,75 = €75,00 = -4%

27 = € 73,00 = €3,65 = €73,00 = -6%

FROM € 3,65 PER KG!



1375-002 Pelagos Mackerel WR
400-600gr Block 2 x 12,5kg -FO

Species: :Scomber scombrus

Price per SU / KG / CU

1 = € 68,75 = €2,75 = €34,38

1390 Milkfish WR 300/500 grs
IQF/IWP 10 kg 20%-ID

Species: :Chanos Chanos

Price per SU / KG / CU

1 = € 24,90 = €2,49 = €24,90

3 = € 23,90 = €2,39 = €23,90 = -4%

10 = € 22,90 = €2,29 = €22,90 = -8%

66 = € 20,90 = €2,09 = €20,90 = -16%

192 = € 19,90 = €1,99 = €19,90 = -20%

FROM € 1,99 PER KG!



1390.1 Milkfish WR 300/500 grs
IQF/IWP 10 kg 10%-ID

Species: :Chanos Chanos

Price per SU / KG / CU

1 = € 24,50 = €2,45 = €24,50



1395 Milkfish WR 500-800 grs
IQF/IWP 10 kg 10%-ID

Species: :Chanos Chanos

Price per SU / KG / CU

1 = € 27,50 = €2,75 = €27,50

3 = € 25,50 = €2,55 = €25,50 = -7%

10 = € 24,50 = €2,45 = €24,50 = -11%

66 = € 23,50 = €2,35 = €23,50 = -15%

192 = € 22,50 = €2,25 = €22,50 = -18%

FROM € 2,25 PER KG!



1396 Milkfish WR 800 gr+ IQF/IWP
10 kg-ID

Species: :Chanos Chanos

Price per SU / KG / CU

1 = € 32,50 = €3,25 = €32,50



1400 Mrigal gutted 2-3 kg 20 kg-MM

Species: :Cirrhinus Cirrhosus

Price per SU / KG / CU

1 = € 79,00 = €3,95 = €79,00

3 = € 76,00 = €3,80 = €76,00 = -4%

10 = € 73,00 = €3,65 = €73,00 = -8%

40 = € 71,00 = €3,55 = €71,00 = -10%

120 = € 69,00 = €3,45 = €69,00 = -13%

FROM € 3,45 PER KG!



1400.8 Mrigal Gutted 3 kg+ 20 kg-
MM

Species: :Cirrhinus Cirrhosus

Price per SU / KG / CU

1 = € 79,80 = €3,99 = €79,80



1402 Mrigal Gutted 3 kg+ 22 kg-MM

Species: :Cirrhinus Cirrhosus

Price per SU / KG / CU

1 = € 87,78 = €3,99 = €87,78



1410 Jona Indian Mackerel WR 6/8
pc/kg 10 x 1 Kg-IN

Species: :Rastelliger Kanagurta

Price per SU / KG / CU

1 = € 22,50 = € 2,25 = € 2,25

3 = € 21,50 = € 2,15 = € 2,15 = -4%

10 = € 20,50 = € 2,05 = € 2,05 = -9%

20 = € 19,50 = € 1,95 = € 1,95 = -13%

66 = € 18,50 = € 1,85 = € 1,85 = -18%

FROM € 1,85 PER KG!



1415 Indian Mackerel WR 8/10 pc/kg
10 x 1 Kg-IN

Species: :Rastelliger Kanagurta

Price per SU / KG / CU

1 = € 19,90 = € 1,99 = € 1,99



1439.4 Jona Red Mullet Indian WR
IQF 500-700 Gr 10 Kg-OM

Species: :Parupeneus Macronemus

Price per SU / KG / CU

1 = € 28,80 = € 2,88 = € 28,80



1439.6 Jona Red Mullet Indian WR
IQF 1-2 Kg 10 Kg-OM

Species: :Parupeneus Macronemus

Price per SU / KG / CU

1 = € 29,80 = € 2,98 = € 29,80



1460-001 Jona Pangasius WG
500-1000g IPB 1 x 5 kg 20% -VN

Species: :Pangasius hypophthalmus

Price per SU / KG / CU

1 = € 12,00 = € 2,40 = € 12,00



1486-001 Jona Black Pomfret WR
400-500g IWP 1 x 5kg 20% -ID

Species: :Parastromateus Niger

Price per SU / KG / CU

1 = € 22,00 = € 4,40

3 = € 21,50 = € 4,30 = -2%

10 = € 21,00 = € 4,20 = -5%

20 = € 20,50 = € 4,10 = -7%

120 = € 19,50 = € 3,90 = -11%

240 = € 18,50 = € 3,70 = -16%

360 = € 18,00 = € 3,60 = -18%



1488.6 Jona Black Pomfret WR 500g-
UP IWP 1 x 5kg 20% -ID

Species: :Parastromateus Niger

Price per SU / KG / CU

1 = € 23,00 = € 4,60 = € 23,00

3 = € 22,50 = € 4,50 = € 22,50 = -2%

10 = € 21,75 = € 4,35 = € 21,75 = -5%

20 = € 21,25 = € 4,25 = € 21,25 = -8%

120 = € 20,25 = € 4,05 = € 20,25 = -12%

240 = € 19,25 = € 3,85 = € 19,25 = -16%

360 = € 18,50 = € 3,70 = € 18,50 = -20%

FROM € 3,70 PER KG!



1489.3 Black Pomfret WR 200-300
Gr 10 x 1 kg 10%-BD

Species: :Parastromateus Niger

Price per SU / KG / CU

1 = € 45,00 = € 4,50 = € 4,50

3 = € 42,50 = € 4,25 = € 4,25 = -6%

10 = € 41,00 = € 4,10 = € 4,10 = -9%

57 = € 39,50 = € 3,95 = € 3,95 = -12%

FROM € 3,95 PER KG!



1495-001 Jona Silver Pomfret WR
80-100g IQF 10 x 1 kg 20% -CN

Species: :Pampus argenteus

Price per SU / KG / CU

1 = € 38,89 = € 3,89 = € 3,89



1495-002 Jona Silver Pomfret WR
100-120g IQF 10 x 1 kg 20% -C...

Species: :Pampus argenteus
Price per SU / KG / CU
1 = € 39,90 = €3,99 = €3,99



1506-001 Ultimate Taste Golden
Pomfret WR 500-600g IPB 1 x 6k...

Species: :Trachinotus blochii
Price per SU / KG / CU
1 = € 34,20 = €5,70 = €34,20



1540-001 Jona Rabbit fish Otti WR
O/R IQF 10 x 1kg 10% -IN

Species: :Siganus rivulatus
Price per SU / KG / CU
1 = € 28,50 = €2,85 = €2,85
3 = € 26,50 = €2,65 = €2,65 = -7%
10 = € 25,50 = €2,55 = €2,55 = -11%
54 = € 23,50 = €2,35 = €2,35 = -18%

FROM €2,35 PER KG!



1544 Jona Rabbit Fish (Otti) WR IQF
100 gr+ 10 x 1 Kg.-IN

Species: :Siganus Guttatus
Price per SU / KG / CU
1 = € 27,50 = €2,75 = €2,75
3 = € 25,50 = €2,55 = €2,55 = -7%
10 = € 24,50 = €2,45 = €2,45 = -11%
44 = € 23,50 = €2,35 = €2,35 = -15%

FROM €2,35 PER KG!



1563-001 Utimate Taste Argentinian
Seabass WR 1kg-UP 1 x 10kg...

Species: :Acanthistius brasillianus
Price per SU / KG / CU
1 = € 35,00 = €3,50 = €35,00
3 = € 33,50 = €3,35 = €33,50 = -4%
10 = € 31,50 = €3,15 = €31,50 = -10%
75 = € 29,50 = €2,95 = €29,50 = -16%

FROM €2,95 PER KG!



1576-001 Jona Malabar Grouper WR
IWP 15kg -LK

Species: :Epinephelus malabaricus
Price per SU / KG / CU
1 = € 93,00 = €6,20 = €93,00



1581.3 Reefcod/Tsof/Grouper WGS
300-500 4 x 3 Kg 10%-IN

Species: :Epinephelus Dicanthus
Price per SU / KG / CU
1 = € 35,40 = €2,95 = €8,85
3 = € 34,20 = €2,85 = €8,55 = -3%
10 = € 32,40 = €2,70 = €8,10 = -8%
20 = € 31,80 = €2,65 = €7,95 = -10%
42 = € 31,20 = €2,60 = €7,80 = -12%

FROM €2,60 PER KG!



1581.4 Reefcod/Tsof/Grouper WGS
500-700 4 x 3 Kg 10%-IN

Species: :Epinephelus Dicanthus
Price per SU / KG / CU
1 = € 45,00 = €3,75 = €11,25
3 = € 42,00 = €3,50 = €10,50 = -7%
10 = € 40,80 = €3,40 = €10,20 = -9%
42 = € 39,00 = €3,25 = €9,75 = -13%

FROM €3,25 PER KG!



1582.4 Reefcod/Tsof/Grouper WR
300/500 10 Kg IWP 100% NW-IN

Species: :Epinephelus Dicanthus
Price per SU / KG / CU
1 = € 24,50 = €2,45 = €24,50



1583.3 Reefcod/Tsof/Grouper Spotted
WGS 300/500 4x3 Kg IWP ...

Species: :Epinephelus Areolatus

Price per SU / KG / CU

1 = € 31,20 = € 2,60 = € 7,80

3 = € 30,00 = € 2,50 = € 7,50 = -4%

10 = € 28,80 = € 2,40 = € 7,20 = -8%

42 = € 27,00 = € 2,25 = € 6,75 = -13%

FROM € 2,25 PER KG!



1583.4 Reefcod/Tsof/Grouper Spotted
WGS 500-700 4 x 3 Kg 10...

Species: :Epinephelus Areolatus

Price per SU / KG / CU

1 = € 39,00 = € 3,25 = € 9,75



1643-001 Jona Ribbon Fish WR A-
Grade 300-500g IWP 1 x10kg -IN

Species: :Lepturacanthus savala

Price per SU / KG / CU

1 = € 46,00 = € 4,60 = € 46,00



1643-002 Jona Ribbon Fish WR A-
Grade 500-700g IWP 1 x10kg -IN

Species: :Lepturacanthus savala

Price per SU / KG / CU

1 = € 49,50 = € 4,95 = € 49,50



1643-003 Jona Ribbon Fish WR A-
Grade 700-1000g IWP 1 x10kg -I...

Species: :Lepturacanthus savala

Price per SU / KG / CU

1 = € 52,00 = € 5,20 = € 52,00



1670-017 DSD Rohu gutted 2000g-
UP IWP 1 x 20kg 20%-MM

Species: :Labeo rohita

Price per SU / KG / CU

1 = € 68,00 = € 3,40 = € 68,00



1671-001 DSD Rohu Back Gutted
2000g-UP IWP 1 x 20kg 20%-MM

Species: :Labeo rohita

Price per SU / KG / CU

1 = € 59,00 = € 2,95 = € 59,00



1680 Burro/Rubberlip Grunts Mixed
WR IWP 22 kg-ES

Species: :Plectorinchus Mediterraneus

Price per SU / KG / CU

1 = € 21,78 = € 0,99 = € 21,78



1700-001 Pink Salmon WR O/R IQF 1
x 25kg -CA

Species: :Oncorhynchus Gorbuscha

Price per SU / KG / CU

1 = € 98,75 = € 3,95 = € 98,75

3 = € 93,75 = € 3,75 = € 93,75 = -5%

10 = € 90,00 = € 3,60 = € 90,00 = -9%

21 = € 87,50 = € 3,50 = € 87,50 = -11%

FROM € 3,50 PER KG!



1702-001 Chinook Salmon HG 4-7lb
IQF 1 x 25kg -CA

Species: :Oncorhynchus tshawytscha

Price per SU / KG / CU

1 = € 103,75 = € 4,15 = € 103,75
3 = € 98,75 = € 3,95 = € 98,75 = -5%
10 = € 95,00 = € 3,80 = € 95,00 = -8%
21 = € 92,50 = € 3,70 = € 92,50 = -11%

FROM € 3,70 PER KG!



1702-002 Chinook Salmon HG 7-10lb
IQF 1 x 25kg -CA

Species: :Oncorhynchus tshawytscha

Price per SU / KG / CU

1 = € 106,25 = € 4,25 = € 106,25
3 = € 101,25 = € 4,05 = € 101,25 = -5%
10 = € 97,50 = € 3,90 = € 97,50 = -8%
21 = € 95,00 = € 3,80 = € 95,00 = -11%

FROM € 3,80 PER KG!



1703.1 Jona Ceylon White Sardinella
WR 30-100g 10 X 1 Kg IQF...

Species: :Sardinella Albella

Price per SU / KG / CU

1 = € 35,00 = € 3,50 = € 3,50
3 = € 32,50 = € 3,25 = € 3,25 = -7%
10 = € 29,50 = € 2,95 = € 2,95 = -16%
63 = € 27,50 = € 2,75 = € 2,75 = -21%

FROM € 2,75 PER KG!



1710-001 Jona Sardines WR 18/24
IQF 10 x 1kg 20% -PT

Species: :Sardina pilchardus

Price per SU / KG / CU

1 = € 21,50 = € 2,15 = € 2,15
3 = € 19,50 = € 1,95 = € 1,95 = -9%
10 = € 18,50 = € 1,85 = € 1,85 = -14%
20 = € 17,50 = € 1,75 = € 1,75 = -19%
63 = € 16,50 = € 1,65 = € 1,65 = -23%
189 = € 15,90 = € 1,59 = € 1,59 = -26%

FROM € 1,59 PER KG!



1719.5 Jona Seabass Whole Guttred
IQF 400/600 grs 5 Kg 25%-T...

Species: :Dicentrarchus Labrax

Price per SU / KG / CU

1 = € 29,75 = € 5,95 = € 29,75
3 = € 28,75 = € 5,75 = € 28,75 = -3%
10 = € 27,75 = € 5,55 = € 27,75 = -7%
20 = € 26,75 = € 5,35 = € 26,75 = -10%
120 = € 25,75 = € 5,15 = € 25,75 = -13%

FROM € 5,15 PER KG!



1731-003 Snapper/Besugo WR
800-1000gr 1 x 10kg semi IQF-AR

Species: :Pagrus Pagrus

Price per SU / KG / CU

1 = € 39,50 = € 3,95



1731-004 Snapper/Besugo WR
600-1000gr 1 x 10kg semi IQF-AR

Species: :Pagrus Pagrus

Price per SU / KG / CU

1 = € 39,50 = € 3,95



1788 Jona Ceylon Sengani Fish
200-800 grs WR 5 x 2 kilo 1...

Species: :Psammoperca waigiensis

Price per SU / KG / CU

1 = € 49,50 = € 4,95 = € 9,90
3 = € 47,50 = € 4,75 = € 9,50 = -4%
10 = € 45,00 = € 4,50 = € 9,00 = -9%

FROM € 4,50 PER KG!



1814 Dory Snappers/Black Spot
Seaperch 0.2 - 1 kg 5 x 2 k...

Species: :Lutjanus Fulviflamma

Price per SU / KG / CU

1 = € 32,50 = € 3,25 = € 6,50
3 = € 29,50 = € 2,95 = € 5,90 = -9%
10 = € 28,50 = € 2,85 = € 5,70 = -12%
63 = € 26,50 = € 2,65 = € 5,30 = -18%

FROM € 2,65 PER KG!



1832 Jona Ceylon Kingsnappers /
Jobfish 200-1000g 2 x 5kg...

Species: :Pristipomoides typus

Price per SU / KG / CU

1 = € 35,00 = €3,50 = €17,50

3 = € 32,50 = €3,25 = €16,25 = -7%

10 = € 29,50 = €2,95 = €14,75 = -16%

FROM €2,95 PER KG!



1835.2 Lane Snappers (Lutj.Synagris)
200g-UP WGS IQF 10 x 1...

Species: :Lutjanus Synagris

Price per SU / KG / CU

1 = € 54,90 = €5,49 = €5,49

3 = € 53,90 = €5,39 = €5,39 = -2%

10 = € 51,90 = €5,19 = €5,19 = -5%

20 = € 50,90 = €5,09 = €5,09 = -7%

60 = € 49,90 = €4,99 = €4,99 = -9%

FROM €4,99 PER KG!



1850-001 DSD Tilapia WGS 300-500g
IWP 1 x 4kg 20% -TH

Species: :Oreochromis Niloticus

Price per SU / KG / CU

1 = € 13,00 = €3,25 = €13,00



1860-005 DSD Tilapia WGS 300-500g
IWP 1 x 4kg 20% -CN

Species: :Oreochromis Niloticus

Price per SU / KG / CU

1 = € 12,80 = €3,20 = €12,80

3 = € 12,40 = €3,10 = €12,40 = -3%

10 = € 12,00 = €3,00 = €12,00 = -6%

20 = € 11,60 = €2,90 = €11,60 = -9%

132 = € 11,00 = €2,75 = €11,00 = -14%

FROM €2,75 PER KG!



1860-006 DSD Tilapia WGS 500-800g
IWP 1 x 4kg 20% -CN

Species: :Oreochromis Niloticus

Price per SU / KG / CU

1 = € 13,00 = €3,25 = €13,00



1860-016 DSD Tilapia WGS 800g-UP
IWP 1 x 5kg 20% -CN

Species: :Oreochromis Niloticus

Price per SU / KG / CU

1 = € 17,00 = €3,40 = €17,00



1862 Tilapia G&S 500-800 gr 4 kg
20%-CN

Species: :Oreochromis Niloticus

Price per SU / KG / CU

1 = € 12,80 = €3,20 = €12,80



1879-001 OD Trevally/Blue Runner
WR 300-800g IQF 1 x 10 kg -S...

Species: :Caranx crisos

Price per SU / KG / CU

1 = € 32,50 = €3,25



1881-002 Jona Trevally/Cavalli WG
3-5kg IPB 1 x 20kg -SR

Species: :Caranx Hippos

Price per SU / KG / CU

1 = € 60,00 = €3,00 = €60,00



1882-001 OD Trevalli/Cavalli WR
300-700g IQF 1 x 10kg -SR

Species: :Caranx Hippos
Price per SU / KG / CU
1 = € 35,00 = € 3,50



1884-001 Jona Trevally / Parai WR
1-2kg IWP 15kg 15% -LK

Species: :Caranx spp
Price per SU / KG / CU
1 = € 74,25 = € 4,95 = € 74,25



1884-002 Jona Trevally / Parai WR
2000g-UP IPB 1 x 15kg 15% -...

Species: :Caranx spp
Price per SU / KG / CU
1 = € 71,25 = € 4,75 = € 71,25
3 = € 68,25 = € 4,55 = € 68,25 = -4%
10 = € 66,75 = € 4,45 = € 66,75 = -6%
28 = € 65,25 = € 4,35 = € 65,25 = -8%
84 = € 63,75 = € 4,25 = € 63,75 = -11%

FROM € 4,25 PER KG!



1887.3 Jona Ceylon Trevally (Caranx
Sp) WR 0.1-0.5 kg 2 x 5...

Species: :Caranx sp.
Price per SU / KG / CU
1 = € 46,90 = € 4,69 = € 46,90
3 = € 44,90 = € 4,49 = € 44,90 = -4%
10 = € 43,90 = € 4,39 = € 43,90 = -6%
56 = € 41,90 = € 4,19 = € 41,90 = -11%

FROM € 4,19 PER KG!



1921-003 Little Tunny 2000-3000g
IWP 1 x 10kg -IN

Species: :Euthynnus Affinis
Price per SU / KG / CU
1 = € 22,50 = € 2,25 = € 22,50



1950 Yellow Croakers G&S 300-500
gr 10 x 1 kg IQF-SR

Species: :Micropogonias Furnieri
Price per SU / KG / CU
1 = € 37,50 = € 3,75 = € 3,75
3 = € 36,50 = € 3,65 = € 3,65 = -3%
10 = € 35,50 = € 3,55 = € 3,55 = -5%
60 = € 34,50 = € 3,45 = € 3,45 = -8%

FROM € 3,45 PER KG!



1961 Yellow Croakers WR 500-1000
gr 1 x 10 kg IQF-SR

Species: :Micropogonias Furnieri
Price per SU / KG / CU
1 = € 36,50 = € 3,65 = € 36,50
3 = € 35,50 = € 3,55 = € 35,50 = -3%
10 = € 34,50 = € 3,45 = € 34,50 = -5%
60 = € 33,50 = € 3,35 = € 33,50 = -8%

FROM € 3,35 PER KG!



1970 Yellow Croakers WG 500-1000
gr 1 x 10 kg IQF-SR

Species: :Micropogonias Furnieri
Price per SU / KG / CU
1 = € 41,50 = € 4,15 = € 41,50
3 = € 39,50 = € 3,95 = € 39,50 = -5%
10 = € 38,50 = € 3,85 = € 38,50 = -7%
60 = € 37,50 = € 3,75 = € 37,50 = -10%
180 = € 36,50 = € 3,65 = € 36,50 = -12%

FROM € 3,65 PER KG!



1985.2 Yellow Tail Scad Whole /
Atule Mate 4-6 pcs 10 x 1 k...

Species: :Atule Mate
Price per SU / KG / CU
1 = € 27,50 = € 2,75 = € 2,75



1985.3 Yellow Tail Scad Whole /
Atule Mate 6-8p VAC 10x1 kg...

Species: :Atule Mate

Price per SU / KG / CU

1 = € 22,50 = € 2,25 = € 2,25

3 = € 19,90 = € 1,99 = € 1,99 = -12%

10 = € 18,90 = € 1,89 = € 1,89 = -16%

64 = € 17,90 = € 1,79 = € 1,79 = -20%

192 = € 16,90 = € 1,69 = € 1,69 = -25%

FROM € 1,69 PER KG!



2011 Barracuda Steaks Jona Skin On
100-250 g 10 x 1 Kg-IN

Species: :Sphyræna jello

Price per SU / KG / CU

1 = € 39,50 = € 3,95 = € 3,95



2070 Jona Blue Shark Steaks Skin On
100-300 gr IQF 8x1 Kg...

Species: :Prionace Glauca

Price per SU / KG / CU

1 = € 19,84 = € 2,48 = € 2,48

3 = € 18,24 = € 2,28 = € 2,28 = -8%

10 = € 17,44 = € 2,18 = € 2,18 = -12%

20 = € 16,64 = € 2,08 = € 2,08 = -16%

72 = € 15,84 = € 1,98 = € 1,98 = -20%

216 = € 15,04 = € 1,88 = € 1,88 = -24%

360 = € 14,24 = € 1,78 = € 1,78 = -28%

FROM € 1,78 PER KG!



2120 Kandratiki/Croaker steaks
skinon 100-300 gr 10 x 1 k...

Species: :Cynoscion Virescens

Price per SU / KG / CU

1 = € 65,00 = € 6,50 = € 6,50



2120-001 Jona African Style
Kandratiki H/O Steak IQF 10 x 1kg...

Species: :Cynoscion virescens

Price per SU / KG / CU

1 = € 49,50 = € 4,95 = € 4,95



2130 JONA Kingfish steaks skin on
75-250 gr 10 x 1 kg IQF...

Species: :Scomberomorus Spp

Price per SU / KG / CU

1 = € 44,90 = € 4,49 = € 4,49



2130-001 Jona Kingfish Steak
20-150g S/ON IQF 10 x 1kg 10% -S...

Species: :Scomberomorus brasiliensis

Price per SU / KG / CU

1 = € 44,50 = € 4,45 = € 4,45

3 = € 41,50 = € 4,15 = € 4,15 = -7%

10 = € 39,50 = € 3,95 = € 3,95 = -11%

52 = € 37,50 = € 3,75 = € 3,75 = -16%

FROM € 3,75 PER KG!



2170 Jona Halibut Steaks 5 x 1 kg
20%-GL

Species: :Reinhardtius hippoglossoides

Price per SU / KG / CU

1 = € 38,75 = € 7,75 = € 7,75



2170-001 Jona Halibut steaks IQF 5 x
1kg 20%-GL

Species: :Reinhardtius hippoglossoides

Price per SU / KG / CU

1 = € 38,75 = € 7,75 = € 7,75



2186-001 Jona Malabar Grouper
Steak IQF 10 x 1 kg 15% -LK

Species: :Epinephelus malabaricus

Price per SU / KG / CU

1 = € 68,00 = € 6,80 = € 6,80



2188-001 OD Papoena/Grouper
Steaks 80-200g IQF 10 x 1kg -SR

Species: :Lobotus surinamensis

Price per SU / KG / CU

1 = € 54,50 = € 5,45
3 = € 51,50 = € 5,15 == -6%
10 = € 49,50 = € 4,95 == -9%



2234-001 Jona Chinook Salmon
Steaks 2.5cm IQF 10 x 1kg 20% -P...

Species: :Oncorhynchus tshawytscha

Price per SU / KG / CU

1 = € 45,00 = € 4,50 = € 4,50



2234-002 Jona Chinook Salmon
Steaks offcut 14 kg-PT

Species: :Oncorhynchus tshawytscha

Price per SU / KG / CU

1 = € 31,50 = € 2,25 = € 31,50
10 = € 27,30 = € 1,95 = € 27,30 = -13%

FROM € 1,95 PER KG!



2235-002 Jona Pink Salmon Steaks
offcuts 14 kilo-PT

Species: :Oncorhynchus Gorbuscha

Price per SU / KG / CU

1 = € 31,50 = € 2,25 = € 31,50
10 = € 27,30 = € 1,95 = € 27,30 = -13%

FROM € 1,95 PER KG!



2236-001 Jona Chum Salmon Steaks
2.5cm IQF 10 x 1kg 20% -PT

Species: :Oncorhynchus keta

Price per SU / KG / CU

1 = € 35,00 = € 3,50 = € 3,50



2236-002 Jona Chum Salmon Steaks
offcuts 14 kg -PT

Species: :Oncorhynchus keta

Price per SU / KG / CU

1 = € 35,00 = € 2,50 = € 35,00



2251-002 Jona Tilapia Steaks
150-250g VP 10 x 1kg 20% -CN

Species: :Oreochromis Niloticus

Price per SU / KG / CU

1 = € 38,00 = € 3,80
3 = € 36,50 = € 3,65 == -4%
10 = € 34,50 = € 3,45 == -9%
56 = € 32,50 = € 3,25 == -14%



2252-001 Ultimate Taste Red Tilapia
Steaks 150-300g IQF 4x1kg...

Species: :Oreochromis Niloticus

Price per SU / KG / CU

1 = € 14,00 = € 3,50
3 = € 13,40 = € 3,35 == -4%
10 = € 12,60 = € 3,15 == -10%
20 = € 11,80 = € 2,95 == -16%



2262-001 Jona Cavalli Steak 50-200g
IQF 10 x 1kg 10% - SR

Species: :Caranx Hippos

Price per SU / KG / CU

1 = € 36,80 = €3,68 = €3,68

3 = € 34,80 = €3,48 = €3,48 = -5%

10 = € 32,80 = €3,28 = €3,28 = -11%

48 = € 31,80 = €3,18 = €3,18 = -14%

FROM € 3,18 PER KG!



2270 JONA Skipjack Tuna Steaks Skin
on 200-400 gr 10 x 1 ...

Species: :Katsuwonus Pelamis

Price per SU / KG / CU

1 = € 37,90 = €3,79 = €3,79

3 = € 35,90 = €3,59 = €3,59 = -5%

10 = € 34,90 = €3,49 = €3,49 = -8%

20 = € 32,90 = €3,29 = €3,29 = -13%

64 = € 31,90 = €3,19 = €3,19 = -16%

192 = € 30,90 = €3,09 = €3,09 = -18%

320 = € 29,90 = €2,99 = €2,99 = -21%

FROM € 2,99 PER KG!



2270.1 Bonito/Little Tunny/Kawa
Kawa Steaks S.O. 100-300 10...

Species: :Euthynnus Affinis

Price per SU / KG / CU

1 = € 32,50 = €3,25 = €3,25

3 = € 31,50 = €3,15 = €3,15 = -3%

10 = € 30,50 = €3,05 = €3,05 = -6%

20 = € 29,50 = €2,95 = €2,95 = -9%

66 = € 28,50 = €2,85 = €2,85 = -12%

FROM € 2,85 PER KG!



2273 JONA Yellowfin Tuna Steaks
Skin on 200-400 grs 10 x ...

Species: :Thunnus Albacares

Price per SU / KG / CU

1 = € 43,50 = €4,35 = €4,35

3 = € 41,50 = €4,15 = €4,15 = -5%

10 = € 39,50 = €3,95 = €3,95 = -9%

FROM € 3,95 PER KG!



2351 Salmon Portions Chain (Salmo
Salar) 10 x (4 x 125gr)...

Species: :Salmo Salar

Price per SU / KG / CU

1 = € 69,75 = €13,95 = €6,98

3 = € 68,75 = €13,75 = €6,88 = -1%

10 = € 67,50 = €13,50 = €6,75 = -3%

FROM € 6,75 PER CU!



2380 Untrimmed Pangafillet
170-230 gr 80% NW 10 x 1 kg -...

Species: :Pangasius hypophthalmus

Price per SU / KG / CU

1 = € 24,50 = €2,45 = €4,90



2380-001 Jona Untrimmed Pangasius
Fillet 200-250g IQF 10 x 1k...

Species: :Pangasius hypophthalmus

Price per SU / KG / CU

1 = € 23,50 = €2,35 = €2,35



2380-002 Jona Untrimmed Pangasius
Fillet 3 pcs IQF 10 x 1kg 2...

Species: :Pangasius hypophthalmus

Price per SU / KG / CU

1 = € 22,50 = €2,25 = €2,25



2380-004 Jona Untrimmed Pangasius
Fillet 5 pcs IQF 10 x 1kg 2...

Species: :Pangasius hypophthalmus

Price per SU / KG / CU

1 = € 22,50 = €2,25 = €2,25



2500 Smoked Barracuda rings bulk 1
x 5 kg IQF-SR

Species: :Sphyraena jello

Price per SU / KG / CU

1 = € 33,75 = € 6,75 = € 33,75
 3 = € 28,95 = € 5,79 = € 28,95 = -14%
 5 = € 27,95 = € 5,59 = € 27,95 = -17%
 10 = € 26,95 = € 5,39 = € 26,95 = -20%
 20 = € 25,95 = € 5,19 = € 25,95 = -23%
 60 = € 24,95 = € 4,99 = € 24,95 = -26%
 180 = € 23,95 = € 4,79 = € 23,95 = -29%

FROM € 4,79 PER KG!



2520 Smoked Catfish Kupila (M) IQF
Butterfly 5 kg -SR

Species: :Arius Proops

Price per SU / KG / CU

1 = € 38,75 = € 7,75 = € 38,75
 3 = € 37,50 = € 7,50 = € 37,50 = -3%
 10 = € 36,25 = € 7,25 = € 36,25 = -6%
 60 = € 34,75 = € 6,95 = € 34,75 = -10%

FROM € 6,95 PER KG!



2525-001 Jona Dried Catfish / Kupila
Cuts 8 x 500g IQF-SR

Species: :Arius Proops

Price per SU / KG / CU

1 = € 31,25 = € 7,81 = € 3,91
 3 = € 29,80 = € 7,45 = € 3,73 = -5%
 10 = € 29,00 = € 7,25 = € 3,63 = -7%
 48 = € 27,80 = € 6,95 = € 3,48 = -11%

FROM € 3,48 PER CU!



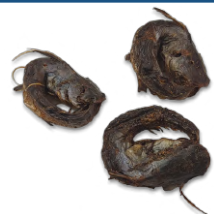
2532 Jona Dried Catfish Fillet IQF 50
x 80 gr-SR (19-07-2...

Species: :Arius Proops

Price per SU / KG / CU

1 = € 79,80 = € 19,95 = € 1,60
 3 = € 75,80 = € 18,95 = € 1,52 = -5%
 5 = € 71,80 = € 17,95 = € 1,44 = -10%
 10 = € 67,80 = € 16,95 = € 1,36 = -15%
 20 = € 63,80 = € 15,95 = € 1,28 = -20%

FROM € 1,28 PER CU!



2540 Smoked Cat Fish rings small 5
kilo-SR

Species: :Arius Proops

Price per SU / KG / CU

1 = € 27,75 = € 5,55 = € 27,75
 3 = € 26,75 = € 5,35 = € 26,75 = -4%
 5 = € 25,75 = € 5,15 = € 25,75 = -7%
 10 = € 24,75 = € 4,95 = € 24,75 = -11%
 20 = € 24,25 = € 4,85 = € 24,25 = -13%
 60 = € 23,75 = € 4,75 = € 23,75 = -14%

FROM € 4,75 PER KG!



2542 Jona Dried Cat Fish rings small
8 x 500 grs 4 kilo-S...

Species: :Arius Proops

Price per SU / KG / CU

1 = € 23,00 = € 5,75 = € 2,88
 3 = € 22,00 = € 5,50 = € 2,75 = -4%
 10 = € 21,00 = € 5,25 = € 2,63 = -9%
 20 = € 20,00 = € 5,00 = € 2,50 = -13%
 80 = € 19,00 = € 4,75 = € 2,38 = -17%

FROM € 2,38 PER CU!



2542-001 Jona Dried Catfish
Barbaman Rings 100-160g IQF 8 x 5...

Species: :Bagre Bagre

Price per SU / KG / CU

1 = € 21,00 = € 5,25 = € 2,63
 3 = € 19,80 = € 4,95 = € 2,48 = -6%
 10 = € 19,00 = € 4,75 = € 2,38 = -10%
 20 = € 18,00 = € 4,50 = € 2,25 = -14%
 52 = € 17,00 = € 4,25 = € 2,13 = -19%

FROM € 2,13 PER CU!



2550 Jona Smoked Catfish / Kupila
steaks 1 x 5 Kg IQF-NL

Species: :Arius Proops

Price per SU / KG / CU

1 = € 44,75 = € 8,95 = € 44,75



2560-001 Smoked Herring WG
200-350g MAP 3kg -NL

Species: :Clupea Harengus

Price per SU / KG / CU

1 = € 14,25 = € 4,75
 3 = € 13,95 = € 4,65 = -2%
 10 = € 13,50 = € 4,50 = -5%



6005-001 Sealight Muslitos Breaed
Surimi Crab Claws 10 x 1kg...

Species: :Nemipterus virgatus

Price per SU / KG / CU

1 = € 45,00 = € 4,50 = € 4,50

3 = € 37,90 = € 3,79 = € 3,79 = -16%

10 = € 35,90 = € 3,59 = € 3,59 = -20%

FROM €3,59 PER KG!



6017-001 DSD Surimi crab sticks VP
20 x 500g -CN

Species: :Nemipterus bipunctatus

Price per SU / KG / CU

1 = € 31,90 = € 3,19 = € 1,60

3 = € 29,90 = € 2,99 = € 1,50 = -6%

10 = € 28,90 = € 2,89 = € 1,45 = -9%

FROM €1,45 PER CU!



7150 Mussels breaded and prefried 5
x 1 kilo AA 60 %-NL

Species: :Perna Canaliculus

Price per SU / KG / CU

1 = € 23,75 = € 4,75 = € 4,75



8000-TEMP BBD 13/10/2024
Codfish Crumble 140-160 5 kg-NL

Species: :Gadus morhua

Price per SU / KG / CU

1 = € 19,75 = € 3,95



8002-001 Jimmy Fish Fries Pollock
IQF 5 x 1kg -NL

Species: :Gadus chalcogrammus

Price per SU / KG / CU

1 = € 18,50 = € 3,70 = € 3,70



8003-001 Van der Lee Kibbeling/Cod
nuggets IQF 5 x 1kg -NL

Species: :Gadus morhua

Price per SU / KG / CU

1 = € 36,50 = € 7,30 = € 7,30



8016.1 Fish Nuggets Bonemer 12 x
800 gr - NL

Species: :breaded

Price per SU / KG / CU

1 = € 31,20 = € 3,25 = € 2,60



9031-001 Unagi Kabayaki / Roasted
Eel VP 10oz 1 x 5kg -CN

Species: :Anguilla rostrata

Price per SU / KG / CU

1 = € 119,50 = € 23,90 = € 7,47



4001.5 Jona Fresh Water shrimps
HOSO 13/15 10 x 1 kg 20%-BD

Species: :macrobrachium rosenbergii

Price per SU / KG / CU

1 = € 75,00 = €7,50 = €7,50
3 = € 69,50 = €6,95 = €6,95 = -7%
10 = € 67,50 = €6,75 = €6,75 = -10%
64 = € 65,00 = €6,50 = €6,50 = -13%

FROM € 6,50 PER KG!



4070.1 Vannamei shrimps HOSO
20/30 12 x 1 kg 25% -ECUADOR

Species: :Penaeus Vannamei

Price per SU / KG / CU

1 = € 78,00 = €6,50 = €6,50
3 = € 74,40 = €6,20 = €6,20 = -5%
10 = € 71,40 = €5,95 = €5,95 = -8%

FROM € 5,95 PER KG!



4071-004 WB Vannamei shrimps
HOSO 50/60 6 x 2kg 20% -EC

Species: :Litopenaeus vannamei

Price per SU / KG / CU

1 = € 67,20 = €5,60 = €11,20



4071.8 WD Premium Vannamei
shrimps HOSO 30/40 6 x 2 kg 20% ...

Species: :Penaeus Vannamei

Price per SU / KG / CU

1 = € 89,90 = €7,49 = €14,98



4073.2 Jona Premium Vannamei
shrimps HOSO RC 20/30 10x1 kg ...

Species: :Penaeus Vannamei

Price per SU / KG / CU

1 = € 65,00 = €6,50 = €6,50
3 = € 62,50 = €6,25 = €6,25 = -4%
10 = € 59,50 = €5,95 = €5,95 = -8%
20 = € 57,50 = €5,75 = €5,75 = -12%
66 = € 55,00 = €5,50 = €5,50 = -15%
192 = € 54,00 = €5,40 = €5,40 = -17%

FROM € 5,40 PER KG!



4073.3 Jona Premium Vannamei
shrimps HOSO RC 30/40 10x1 kg ...

Species: :Penaeus Vannamei

Price per SU / KG / CU

1 = € 59,50 = €5,95 = €5,95
3 = € 55,00 = €5,50 = €5,50 = -8%
10 = € 52,50 = €5,25 = €5,25 = -12%
20 = € 51,00 = €5,10 = €5,10 = -14%
66 = € 48,50 = €4,85 = €4,85 = -18%
192 = € 47,50 = €4,75 = €4,75 = -20%

FROM € 4,75 PER KG!



4073.7 Jona Premium Vannamei
shrimps HOSO RC 40/50 10x1 kg ...

Species: :Penaeus Vannamei

Price per SU / KG / CU

1 = € 52,50 = €5,25 = €5,25
10 = € 49,50 = €4,95 = €4,95 = -6%
20 = € 48,50 = €4,85 = €4,85 = -8%
66 = € 46,50 = €4,65 = €4,65 = -11%
192 = € 45,50 = €4,55 = €4,55 = -13%

FROM € 4,55 PER KG!



4150-008 DSD Vannamei Cooked
PDTO 26/30 IQF 10 x 1kg 30% -VN

Species: :Litopenaeus vannamei

Price per SU / KG / CU

1 = € 79,80 = €7,98 = €7,98
3 = € 77,80 = €7,78 = €7,78 = -3%

FROM € 7,78 PER KG!



4150-009 DSD Vannamei Cooked
PDTO 31/40 IQF 10 x 1kg 30% -VN

Species: :Litopenaeus vannamei

Price per SU / KG / CU

1 = € 77,50 = €7,75 = €7,75



4150-010 DSD Vannamei Cooked
 PDTO 41/50 IQF 10 x 1kg 30% -VN

Species: :Litopenaeus vannamei

Price per SU / KG / CU

1 = € 75,00 = €7,50 = €7,50
 3 = € 72,00 = €7,20 = €7,20 = -4%
 10 = € 69,50 = €6,95 = €6,95 = -7%

FROM €6,95 PER KG!



4230-031 Bonemer Black Tiger P&D
 16/20 IQF 10 x 1kg 30% -BD

Species: :Penaeus monodon

Price per SU / KG / CU

1 = € 82,80 = €8,28 = €8,28
 3 = € 79,80 = €7,98 = €7,98 = -4%
 10 = € 77,80 = €7,78 = €7,78 = -6%
 54 = € 75,80 = €7,58 = €7,58 = -8%

FROM €7,58 PER KG!



4275-024 MdM Vannamei Shrimps
 P&D 8/12 IQF 10 x 1kg 30%-IN

Species: :Litopenaeus vannamei

Price per SU / KG / CU

1 = € 87,80 = €8,78 = €8,78
 3 = € 85,80 = €8,58 = €8,58 = -2%
 10 = € 82,80 = €8,28 = €8,28 = -6%
 64 = € 79,80 = €7,98 = €7,98 = -9%

FROM €7,98 PER KG!

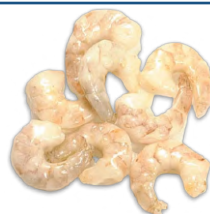


4275-030 DSD Vannamei Shrimps
 P&D 71/90 IQF 10 x 1kg 25%-IN

Species: :Litopenaeus vannamei

Price per SU / KG / CU

1 = € 0,00



4275.3 Vannamei shrimps P&D
 16/20 10 x 1 kg 30%-VN

Species: :Penaeus Vannamei

Price per SU / KG / CU

1 = € 77,50 = €7,75 = €7,75



4276-002 MdM Vannamei Shrimps
 P&D 31/40 IQF 10 x 1kg 30%-VN

Species: :Litopenaeus vannamei

Price per SU / KG / CU

1 = € 62,50 = €6,25 = €6,25
 3 = € 59,50 = €5,95 = €5,95 = -5%
 10 = € 57,50 = €5,75 = €5,75 = -8%
 64 = € 55,00 = €5,50 = €5,50 = -12%

FROM €5,50 PER KG!



4276-003 MdM Vannamei Shrimps
 P&D 13/15 IQF 10 x 1kg 30%-VN

Species: :Litopenaeus vannamei

Price per SU / KG / CU

1 = € 78,80 = €7,88 = €7,88
 3 = € 74,80 = €7,48 = €7,48 = -5%
 10 = € 72,80 = €7,28 = €7,28 = -8%
 64 = € 70,80 = €7,08 = €7,08 = -10%
 192 = € 69,80 = €6,98 = €6,98 = -11%

FROM €6,98 PER KG!



4276-005 MdM Vannamei Shrimps
 P&D 21/25 IQF 10 x 1kg 30%-VN

Species: :Litopenaeus vannamei

Price per SU / KG / CU

1 = € 68,50 = €6,85 = €6,85
 3 = € 66,50 = €6,65 = €6,65 = -3%
 10 = € 64,50 = €6,45 = €6,45 = -6%

FROM €6,45 PER KG!



4276-007 DSD Vannamei Shrimps
 P&D 16/20 IQF 10 x 1kg 30%-VN

Species: :Litopenaeus vannamei

Price per SU / KG / CU

1 = € 77,50 = €7,75 = €7,75
 3 = € 75,00 = €7,50 = €7,50 = -3%
 10 = € 72,50 = €7,25 = €7,25 = -6%
 64 = € 69,50 = €6,95 = €6,95 = -10%

FROM €6,95 PER KG!



4276-009 DSD Vannamei Shrimps
P&D 26/30 IQF 10 x 1kg 30%-VN

Species: :Litopenaeus vannamei
Price per SU / KG / CU
1 = € 67,50 = €6,75 = €6,75



4276-024 DSD Vannamei Shrimps
P&D 51/60 IQF 10 x 1kg 25%-VN

Species: :Litopenaeus vannamei
Price per SU / KG / CU
1 = € 59,50 = €5,95 = €5,95



4430-011 Bonemer Black Tiger HLSO
ezp 16/20 IQF 10 x 1kg 30% ...

Species: :Penaeus monodon
Price per SU / KG / CU
1 = € 75,80 = €7,58 = €7,58
3 = € 72,80 = €7,28 = €7,28 = -4%
10 = € 70,80 = €7,08 = €7,08 = -7%
54 = € 67,80 = €6,78 = €6,78 = -11%

FROM €6,78 PER KG!



4453-021 MdM Vannamei Shrimps
HLSO ezp 16/20 IQF 10 x 1kg 30%...

Species: :Litopenaeus vannamei
Price per SU / KG / CU
1 = € 67,90 = €6,79
3 = € 65,90 = €6,59 = -3%
10 = € 63,90 = €6,39 = -6%
20 = € 61,90 = €6,19 = -9%
64 = € 59,90 = €5,99 = -12%



4460-003 Jona Vannamei shrimps
HLSO ezp 16/20 10 x 1 kg 25 %...

Species: :Litopenaeus vannamei
Price per SU / KG / CU
1 = € 65,00 = €6,50 = €6,50



4465 JONA Vannamei Shrimps HLSO
easy peel 16/20 10 x 1 kg...

Species: :Penaeus Vannamei
Price per SU / KG / CU
1 = € 67,90 = €6,79 = €6,79
3 = € 65,90 = €6,59 = €6,59 = -3%
10 = € 62,90 = €6,29 = €6,29 = -7%
56 = € 60,90 = €6,09 = €6,09 = -10%
168 = € 59,90 = €5,99 = €5,99 = -12%

FROM €5,99 PER KG!



4920-005 Jona Cooked Shrimps PUD
91/120 IQF 10 x 1kg 25% -BD

Species: :Metapenaeus Monoceros
Price per SU / KG / CU
1 = € 57,50 = €5,75
3 = € 55,50 = €5,55 = -3%
10 = € 53,50 = €5,35 = -7%
56 = € 51,50 = €5,15 = -10%



4920-006 Jona Cooked Shrimps PUD
100/200 IQF 10 x 1kg 25% -BD

Species: :Metapenaeus Monoceros
Price per SU / KG / CU
1 = € 57,50 = €5,75
3 = € 55,50 = €5,55 = -3%
10 = € 53,50 = €5,35 = -7%



5030-001 Nordic Cooked Pandalus
90/120 IQF 5x 1kg 20% -DK

Species: :Pandalus Borealis
Price per SU / KG / CU
1 = € 29,75 = €5,95 = €5,95
3 = € 28,75 = €5,75 = €5,75 = -3%
10 = € 27,50 = €5,50 = €5,50 = -8%
20 = € 26,50 = €5,30 = €5,30 = -11%
120 = € 25,75 = €5,15 = €5,15 = -13%

FROM €5,15 PER KG!



5032 Pandalus WR/red cooked
shrimps 90/120 5 x 1000 gr IQ...

Species: :Pandalus Borealis

Price per SU / KG / CU

1 = € 28,75 = € 5,75 = € 5,75



5033-001 Polar Cooked Pandalus WR
90/120 1 x 5 Kg IQF-GL

Species: :Pandalus Borealis

Price per SU / KG / CU

1 = € 31,25 = € 6,25 = € 31,25

3 = € 30,75 = € 6,15 = € 30,75 = -2%

10 = € 29,75 = € 5,95 = € 29,75 = -5%

20 = € 28,75 = € 5,75 = € 28,75 = -8%

162 = € 27,50 = € 5,50 = € 27,50 = -12%

FROM € 5,50 PER KG!



5310-001 Bonemer Breaded Butterfly
Shrimp 21/25 IQF 10 x 1kg ...

Species: :Litopenaeus vannamei

Price per SU / KG / CU

1 = € 65,50 = € 6,55

3 = € 62,50 = € 6,25 = -5%

10 = € 59,50 = € 5,95 = -9%



5322-004 Wanly Breaded Torpedo
Shrimps 26/30 IQF 10 x 1kg -VN

Species: :Litopenaeus vannamei

Price per SU / KG / CU

1 = € 69,90 = € 6,99

3 = € 67,90 = € 6,79 = -3%

10 = € 65,90 = € 6,59 = -6%

45 = € 64,90 = € 6,49 = -7%



5329-001 Isea Potato Shrimps
25g/pcs Tray 20 x 250g -VN

Species: :Solanum tuberosum

Price per SU / KG / CU

1 = € 29,75 = € 5,95



5503-001 CB Snow Crab Meat Cup 6
x 1lb -ID

Species: :Chionoecetes opilio

Price per SU / KG / CU

1 = € 26,86 = € 9,95 = € 4,48
2 = € 24,16 = € 8,95 = € 4,03 = -10%
3 = € 21,47 = € 7,95 = € 3,58 = -20%
10 = € 18,77 = € 6,95 = € 3,13 = -30%

FROM € 3,13 PER CU!



5504-001 CB Red Snow Crab Meat
Cup 6 x 1lb -ID

Species: :Chionoecetes japonicus

Price per SU / KG / CU

1 = € 26,87 = € 9,95 = € 4,48
2 = € 24,17 = € 8,95 = € 4,03 = -10%
3 = € 21,47 = € 7,95 = € 3,58 = -20%
10 = € 18,77 = € 6,95 = € 3,13 = -30%

FROM € 3,13 PER CU!



5508-001 Jona Blue Swimming Crab
150-400g IQF 10 x 1kg 15% -L...

Species: :Portunus pelagicus

Price per SU / KG / CU

1 = € 74,00 = € 7,40 = € 7,40



5549.3 JONA Softshell Crabs / Cua
Lot 12 pcs 10 x 1000 Gr- ...

Species: :Scylla Serata

Price per SU / KG / CU

1 = € 165,00 = € 16,50 = € 16,50
3 = € 155,00 = € 15,50 = € 15,50 = -6%
10 = € 145,00 = € 14,50 = € 14,50 = -12%

FROM € 14,50 PER KG!



5549.7 JONA Softshell Crabs / Cua
Lot 24 pcs 10 x 1000 Gr- ...

Species: :Scylla Serata

Price per SU / KG / CU

1 = € 169,50 = € 16,95 = € 16,95
3 = € 159,50 = € 15,95 = € 15,95 = -6%
10 = € 149,50 = € 14,95 = € 14,95 = -12%
20 = € 145,00 = € 14,50 = € 14,50 = -14%
56 = € 139,50 = € 13,95 = € 13,95 = -18%

FROM € 13,95 PER KG!



5553.3 Softshell Crabs Cleaned Whale
8 pcs 10 x 1000 Gr- BD

Species: :Scylla Serata

Price per SU / KG / CU

1 = € 165,00 = € 16,50 = € 16,50
3 = € 155,00 = € 15,50 = € 15,50 = -6%
10 = € 149,50 = € 14,95 = € 14,95 = -9%
20 = € 145,00 = € 14,50 = € 14,50 = -12%
48 = € 139,50 = € 13,95 = € 13,95 = -15%

FROM € 13,95 PER KG!



5586-001 Cooked Cutted Swamp Crab
6 x 1 kg 5% -SR

Species: :Ucides Cordatus

Price per SU / KG / CU

1 = € 41,70 = € 6,95 = € 6,95
3 = € 39,00 = € 6,50 = € 6,50 = -6%
10 = € 37,50 = € 6,25 = € 6,25 = -10%
48 = € 35,70 = € 5,95 = € 5,95 = -14%

FROM € 5,95 PER KG!



5590-001 Prim7Stars West Africa
Crab WR 200g-UP IQF 1 x 8kg -...

Species: :Callinectes pallidus

Price per SU / KG / CU

1 = € 54,00 = € 6,75 = € 54,00



6352-001 Illex Squid Tentacles
90-120g IQF 1 x 6kg 25% -ES

Species: :Illex Argentinus
Price per SU / KG / CU
1 = € 43,50 = € 7,25 = € 43,50



6353-001 Giant Squid Tentacles Tray
12 x 800g 100% NW -PT

Species: :Dosodicus gigas
Price per SU / KG / CU
1 = € 47,52 = € 4,95 = € 3,96



6354 Giant Squid Tentacles 20-60g
half cut 5 leg 20x500g ...

Species: :Dosodicus Gigas
Price per SU / KG / CU
1 = € 39,90 = € 3,99 = € 2,00



6415-001 Jona Illex Squid Tubes U5
IQF 10 x 1 kg 30% -CN

Species: :Illex Argentinus
Price per SU / KG / CU
1 = € 49,90 = € 4,99 = € 4,99



6435-001 Illex Squid WR 400-600g
Block 1 x 5kg 20% -TW

Species: :Illex Argentinus
Price per SU / KG / CU
1 = € 27,50 = € 5,50 = € 27,50
3 = € 26,25 = € 5,25 = € 26,25 = -5%
10 = € 24,75 = € 4,95 = € 24,75 = -10%
20 = € 24,25 = € 4,85 = € 24,25 = -12%
189 = € 23,25 = € 4,65 = € 23,25 = -15%

FROM € 4,65 PER KG!



6439-001 Jona Ceylon Loligo WR
100-300g IQF 10 x 1kg 15% -LK

Species: :Uroteuthis singhalensis
Price per SU / KG / CU
1 = € 57,00 = € 5,70 = € 5,70



6615-002 California Squid WR
9-11cm Block 12 x 1kg-US

Species: :Doryteuthis opalescens
Price per SU / KG / CU
1 = € 83,40 = € 6,95 = € 6,95



6849-003 Jona Squid Rings Raw
4-8cm IQF 10 x 1kg 30% -CN

Species: :Dosodicus gigas
Price per SU / KG / CU
1 = € 44,00 = € 4,40 = € 4,40



6870-002 Jona Battered Squid rings
40/60 IQF 16 x 500g -ES

Species: :Dosodicus gigas
Price per SU / KG / CU
1 = € 25,60 = € 3,20 = € 1,60



6324 Cuttlefish dirty/ Sepia WR
100/300 gr 10 kg block-NL

Species: :Sepia Spp

Price per SU / KG / CU

1 = € 22,90 = € 2,29 = € 22,90

3 = € 20,90 = € 2,09 = € 20,90 = -9%

10 = € 19,90 = € 1,99 = € 19,90 = -13%

80 = € 18,90 = € 1,89 = € 18,90 = -17%

FROM € 1,89 PER KG!



6345-001 MdM Baby Cuttlefish
Cleaned 60+ WR 10 x 1kg 20% -VN

Species: :Sepiella japonica

Price per SU / KG / CU

1 = € 39,90 = € 3,99 = € 3,99

3 = € 37,90 = € 3,79 = € 3,79 = -5%

10 = € 35,90 = € 3,59 = € 3,59 = -10%

FROM € 3,59 PER KG!



6145.6 JONA Octopus Vulgaris Clean
-500g 2 per Tray 12 kg 1...

Species: :Octopus Vulgaris

Price per SU / KG / CU

1 = € 53,76 = € 4,48 = € 53,76

3 = € 52,56 = € 4,38 = € 52,56 = -2%

10 = € 51,36 = € 4,28 = € 51,36 = -4%

50 = € 48,96 = € 4,08 = € 48,96 = -9%

150 = € 47,70 = € 3,98 = € 47,70 = -11%

FROM € 3,98 PER KG!



6810-001 DSD Seafood Mix Mussel
IQF 10 x 1kg 20% -ES

Species: :Seafood mix

Price per SU / KG / CU

1 = € 54,90 = € 5,49 = € 5,49

3 = € 52,90 = € 5,29 = € 5,29 = -4%

10 = € 49,90 = € 4,99 = € 4,99 = -9%

FROM € 4,99 PER KG!



6811-001 DSD Seafood Mix Surimi
Tray 20 x 500g 20% -CN

Species: :Seafood mix

Price per SU / KG / CU

1 = € 44,90 = € 4,49 = € 2,25

3 = € 41,90 = € 4,19 = € 2,10 = -7%

10 = € 39,90 = € 3,99 = € 2,00 = -11%

FROM € 2,00 PER CU!



6811-002 DSD Seafood Mix Surimi
Tray 10 x 1kg 20% -CN

Species: :Seafood mix

Price per SU / KG / CU

1 = € 41,90 = € 4,19 = € 4,19

3 = € 38,90 = € 3,89 = € 3,89 = -7%

10 = € 36,90 = € 3,69 = € 3,69 = -12%

FROM € 3,69 PER KG!



7010-001 DSD Cooked White Clam
WR 40/60 VP 10 x 1kg 10% -VN

Species: :Meretrix iyrata

Price per SU / KG / CU

1 = € 28,00 = € 2,80 = € 2,80



7035-002 DSD Cooked Yellow Clam
Meat 1000-UP IQF 10 x 1kg 20%...

Species: :Paphia undulata

Price per SU / KG / CU

1 = € 39,90 = € 3,99 = € 3,99



7118-003 Nordic Halfshell Mussels
Medium 10 x 800g -NZ

Species: :Perna canaliculus

Price per SU / KG / CU

1 = € 88,88 = € 11,11 = € 8,89



7135-004 Jona Musselmeat cooked
100-200 IQF 10 x 1kg 10% -CL

Species: :Mytilus chilensis

Price per SU / KG / CU

1 = € 44,80 = € 4,48 = € 4,48

3 = € 42,80 = € 4,28 = € 4,28 = -4%

10 = € 39,80 = € 3,98 = € 3,98 = -11%

54 = € 38,80 = € 3,88 = € 3,88 = -13%

FROM € 3,88 PER KG!



8310.1 Beef Aorta 冰冻牛黄喉 16 x
800 gr IVP-ES

Species: :Bos Taurus
Price per SU / KG / CU
1 = € 108,00 = € 8,44



8311-001 Afribest Cow Veins VP 20 x
500g -NL

Species: :Bos taurus
Price per SU / KG / CU
1 = € 42,00 = € 4,20 = € 2,10
3 = € 39,00 = € 3,90 = € 1,95 = -7%

FROM € 1,95 PER CU!



8312B Cow leg cut Afribest 10 x 1 kg
-NL

Species: :Bos Taurus
Price per SU / KG / CU
1 = € 29,00 = € 2,90 = € 2,90



8313 切条千层肚 Vivasio Cut Cow
Stomach white 30x200...

Species: :Bos Taurus
Price per SU / KG / CU
1 = € 85,50 = € 14,25 = € 2,85



8320-001 Afribest Mask Cow Skin
Halal 8 x 1kg -NL

Species: :Bos taurus
Price per SU / KG / CU
1 = € 25,20 = € 3,15 = € 3,15



8327B Cow Stomach / Abodi Afribest
10 x 1 kilo -NL

Species: :Bos Taurus
Price per SU / KG / CU
1 = € 42,00 = € 4,20 = € 4,20



8327I NIDOLIN Cow Stomach/Abodi 8
x 1kg- IE

Species: :Bos Taurus
Price per SU / KG / CU
1 = € 33,20 = € 4,15 = € 4,15



8328-002 Vivasio Beef Tripe Strips
Naturel 切条黑毛肚 30...

Species: :Bos taurus
Price per SU / KG / CU
1 = € 87,00 = € 14,50



8329 金钱肚 Beef Honeycomb /
Tripes 16 x 800gr-ES

Species: :Bos Taurus
Price per SU / KG / CU
1 = € 88,00 = € 6,88 = € 5,50



8330 牛仔筋 Cowtendon / Cartilla
Vacono / Gân bò 16 ...

Species: :Bos Taurus
Price per SU / KG / CU
1 = € 67,20 = € 5,25 = € 4,20



8330.1 牛板筋 Cowtendon / Backstrap
/ Gân bò 16 x 1 kg...

Species: :Bos Taurus
Price per SU / KG / CU
1 = € 46,00 = € 2,88 = € 2,88



8331 牛杂 Beef Haslet Partymix 16 x
1 kilo-ES

Species: :Bos Taurus
Price per SU / KG / CU
1 = € 82,40 = € 5,15 = € 5,15



8336 牛百叶 VivAsie Cowtripes 16 x
800 gr-ES

Species: :Bos Taurus
Price per SU / KG / CU
1 = € 72,00 = € 5,63 = € 4,50



8340N Cow Frozen Cut Afribest 10 x
1 kilo-NL

Species: :Bos Taurus
Price per SU / KG / CU
1 = € 47,00 = € 4,70 = € 4,70



8391-001 Vivasie Cut Pork Feet
vacuum 16 x 1kg -ES

Species: :Sus scrofa
Price per SU / KG / CU
1 = € 48,00 = € 3,00 = € 3,00



8040-001 Kokolo Cleaned Hen Halal
IWP 12 x 900g -NL

Species: :Gallus gallus

Price per SU / KG / CU

1 = € 24,84 = € 2,30 = € 2,48



8040-003 Kokolo Cleaned Hen Halal
IWP 10 x 1100g -NL

Species: :Gallus gallus

Price per SU / KG / CU

1 = € 27,50 = € 2,50 = € 2,75



8080 Kokolo Henlegs Halal A grade
(Strong Chicken) 10 kg-...

Species: :Gallus Gallus

Price per SU / KG / CU

1 = € 23,00 = € 2,30 = € 23,00



8091-001 Peking Duck Heads 10 x
1kg -PT

Species: :Anas platyrhynchos

Price per SU / KG / CU

1 = € 15,00 = € 1,50



8092 鸭舌 (带须) Duck Tongue XL
6 x 1000 grs -PT

Species: :Anas platyrhynchos

Price per SU / KG / CU

1 = € 59,70 = € 9,95 = € 9,95

3 = € 57,00 = € 9,50 = € 9,50 = -5%

10 = € 53,70 = € 8,95 = € 8,95 = -10%

FROM € 8,95 PER KG!



8092.2 鸭胗 Duck Gizzards 10x1kg
-PT

Species: :Anas platyrhynchos

Price per SU / KG / CU

1 = € 36,00 = € 3,60 = € 3,60



8093-001 Peking Duck Wings 2 joints
10 x 1kg -PT

Species: :Anas platyrhynchos

Price per SU / KG / CU

1 = € 16,50 = € 1,65



8094 鸭脖 Cleaned Duck Necks 10 x
1000 grs -PT

Species: :Anas platyrhynchos

Price per SU / KG / CU

1 = € 18,50 = € 1,85 = € 1,85



8094-001 Peking Duck Necks 10 x
1kg -PT

Species: :Anas platyrhynchos

Price per SU / KG / CU

1 = € 18,50 = € 1,85



8095-001 Peking Duck Intestine 8 x 1kg -PT

Species: :Anas platyrhynchos
 Price per SU / KG / CU
 1 = € 71,04 = € 8,88



8096-002 Duck Griller Without Organs 6 x 1800g -PT

Species: :Anas platyrhynchos
 Price per SU / KG / CU
 1 = € 36,18 = € 3,35
 3 = € 34,02 = € 3,15 == -6%
 10 = € 31,86 = € 2,95 == -12%



8096-004 Duck Griller Without Organs 6 x 2000g -PT

Species: :Anas platyrhynchos
 Price per SU / KG / CU
 1 = € 40,20 = € 3,35
 3 = € 37,80 = € 3,15 == -6%
 10 = € 35,40 = € 2,95 == -12%



8096-005 Duck Griller Without Organs 6 x 2200g -PT

Species: :Anas platyrhynchos
 Price per SU / KG / CU
 1 = € 44,22 = € 3,35
 3 = € 41,58 = € 3,15 == -6%
 10 = € 38,94 = € 2,95 == -12%



8096-007 Duck Griller Without Organs 6 x 2600g -PT

Species: :Anas platyrhynchos
 Price per SU / KG / CU
 1 = € 52,56 = € 3,37
 3 = € 49,14 = € 3,15 == -7%
 10 = € 46,02 = € 2,95 == -12%



8100-002 D ng F ng Boneless Roasted Duck Halves 16pcs VP 1 ...

Species: :Anas platyrhynchos
 Price per SU / KG / CU
 1 = € 65,80 = € 6,58 = € 4,11
 3 = € 62,80 = € 6,28 = € 3,93 = -5%
 10 = € 61,80 = € 6,18 = € 3,86 = -6%
 72 = € 59,80 = € 5,98 = € 3,74 = -9%
 216 = € 58,80 = € 5,88 = € 3,68 = -11%

FROM € 3,68 PER CU!



8109-001 Peking Duck Feet 10 x 1kg -PT

Species: :Anas platyrhynchos
 Price per SU / KG / CU
 1 = € 18,00 = € 1,80



8142-001 King Strong Chickenleg Cut IQF 10 x 1kg -NL

Species: :Gallus gallus
 Price per SU / KG / CU
 1 = € 36,50 = € 3,65 = € 3,65



8210 Retailpacked Turkey Gizzard 10 x 1 kg -FR

Species: :Meleagris gallopavo
 Price per SU / KG / CU
 1 = € 37,50 = € 3,75 = € 3,75
 3 = € 35,50 = € 3,55 = € 3,55 = -5%
 10 = € 34,50 = € 3,45 = € 3,45 = -8%

FROM € 3,45 PER KG!



8217F Turkey Wings Female 3 joint 1
x 10 kg-GB

Species: :Meleagris gallopavo

Price per SU / KG / CU

1 = € 25,90 = € 2,59 = € 25,90



8224-001 King Turkey Wings
Midpart Cut IQF 10 x 1kg -DE

Species: :Meleagris gallopavo

Price per SU / KG / CU

1 = € 39,90 = € 3,99 = € 3,99



8241-001 Quality Cleaned Quails XL
170-190g Tray 9 x ~720g -...

Species: :Coturnix spp

Price per SU / KG / CU

1 = € 37,26 = € 5,75 = € 4,14



8260 Smoked Turkey Wings Halal
(Midparts) cleaned 5 Kg-FR

Species: :Meleagris gallopavo

Price per SU / KG / CU

1 = € 24,75 = € 4,95 = € 24,75



8658-001 Dunya Frozen Spinach
Chopped 20 x 400g -EG

Species: :Spiacia Oleracea

Price per SU / KG / CU

1 = € 9,80 = € 1,23 = € 0,49



8662-001 Dunya Molokhia Leaves 20
x 400g -EG

Species: :Corchorus Olitorius

Price per SU / KG / CU

1 = € 12,80 = € 1,60 = € 0,64



8663.1 Silva Frozen Half Fried Falafel
with Fava Beans 15 x...

Species: :Corchorus Olitorius

Price per SU / KG / CU

1 = € 15,75 = € 2,63 = € 1,05

3 = € 14,25 = € 2,38 = € 0,95 = -10%

FROM € 0,95 PER CU!



8664.1 Mika Frozen Half Fried Falafel
with Chickpeas 15 x 4...

Species: :Corchorus Olitorius

Price per SU / KG / CU

1 = € 15,75 = € 2,63 = € 1,05

3 = € 14,25 = € 2,38 = € 0,95 = -10%

FROM € 0,95 PER CU!



8665.1 Dunya Frozen Mincéd
Molokhia (Ewedu,Krain, Ademe) 20...

Species: :Corchorus Olitorius

Price per SU / KG / CU

1 = € 12,60 = € 1,58 = € 0,63

3 = € 11,80 = € 1,48 = € 0,59 = -6%

10 = € 11,00 = € 1,38 = € 0,55 = -13%

30 = € 10,20 = € 1,28 = € 0,51 = -19%

132 = € 8,96 = € 1,12 = € 0,45 = -29%

396 = € 8,40 = € 1,05 = € 0,42 = -33%

660 = € 7,92 = € 0,99 = € 0,40 = -37%

FROM € 0,40 PER CU!



8701.1 Water leaves / Boko Boko 22
x 500 grs-CM

Species: :Vegetables

Price per SU / KG / CU

1 = € 35,75 = € 3,25 = € 1,63

3 = € 34,10 = € 3,10 = € 1,55 = -5%

10 = € 31,90 = € 2,90 = € 1,45 = -11%

36 = € 30,25 = € 2,75 = € 1,38 = -15%

FROM € 1,38 PER CU!



8725 Biteku-tekku / Sweet Amaranth
30 x 500 gr -CM

Species: :Vegetables

Price per SU / KG / CU

1 = € 36,00 = € 2,40 = € 1,20

3 = € 34,50 = € 2,30 = € 1,15 = -4%

10 = € 33,00 = € 2,20 = € 1,10 = -8%

48 = € 31,50 = € 2,10 = € 1,05 = -13%

FROM € 1,05 PER CU!



8725-001 Tasty Biteku-Teku /
Foolong / Sweet Amaranth 30 x 50...

Species: :Amaranthus spp

Price per SU / KG / CU

1 = € 36,00 = € 2,40 = € 1,20



8736-001 Tasty
Okazi/Fumbua/Eru/Okok 75 x 227gr
-CM

Species: :Gnetum africanum

Price per SU / KG / CU

1 = € 120,00 = € 5,78 = € 1,60



8743.1 Huckleberry Leaves (Njama-Njama) 30 x 500 grs-CM

Species: :Vegetables

Price per SU / KG / CU

1 = € 31,50 = € 2,10 = € 1,05

3 = € 27,00 = € 1,80 = € 0,90 = -14%

10 = € 24,75 = € 1,65 = € 0,83 = -21%

44 = € 23,25 = € 1,55 = € 0,78 = -26%

FROM € 0,78 PER CU!



8748-001 Tasty Utazi Leaves 40 x 300g -CM

Species: :Gongronema latifolium

Price per SU / KG / CU

1 = € 90,00 = € 7,50 = € 2,25



8749.1 Frozen Fresh Oha Leaves 40 x 300 gr-CM

Species: :Vegetables

Price per SU / KG / CU

1 = € 60,00 = € 5,00 = € 1,50

3 = € 45,00 = € 3,75 = € 1,13 = -25%

10 = € 42,00 = € 3,50 = € 1,05 = -30%

20 = € 39,00 = € 3,25 = € 0,98 = -35%

36 = € 35,40 = € 2,95 = € 0,89 = -41%

FROM € 0,89 PER CU!



8749.2 Frozen Fresh Uziza Leaves 40 x 300 gr-CM

Species: :Vegetables

Price per SU / KG / CU

1 = € 78,00 = € 6,50 = € 1,95



8749.4 Frozen Fresh Nchawu (Scent Leaves, Masep) 40 x 300 g...

Species: :Vegetables

Price per SU / KG / CU

1 = € 83,60 = € 6,97 = € 2,09

3 = € 82,00 = € 6,83 = € 2,05 = -2%

10 = € 79,60 = € 6,63 = € 1,99 = -5%

20 = € 78,00 = € 6,50 = € 1,95 = -7%

63 = € 75,20 = € 6,27 = € 1,88 = -10%

FROM € 1,88 PER CU!



8755-001 Tasty Cut Bitterleaf/Ndole 30 x 500g -CM

Species: :Vernonia amygdalina

Price per SU / KG / CU

1 = € 37,50 = € 2,50 = € 1,25



8770-001 Tasty Ponde/Saka Saka 30 x 500g -CM

Species: :Manihot esculenta

Price per SU / KG / CU

1 = € 28,50 = € 1,90 = € 0,95



8770-002 Tasty Ponde/Saka Saka 15 x 1kg -CM

Species: :Manihot esculenta

Price per SU / KG / CU

1 = € 28,50 = € 1,90



8770.1 Smoothed Ponde / Cassava Leaves 30x500gr-CM

Species: :Vegetables

Price per SU / KG / CU

1 = € 27,75 = € 1,85



8771-001 Tasty Ponda Caoutchouc
15 x 1kg -CM

Species: :Manihot esculenta
'Caoutchouc'

Price per SU / KG / CU

1 = € 27,00 = € 1,80 = € 1,80



8771.1 Ponda / Saka Saka Cameroon
30x500gr-CM

Species: :Vegetables

Price per SU / KG / CU

1 = € 28,50 = € 1,90 = € 0,95



8779.1 Garden Eggs / Eggplants 30 x
500 gr-CM

Species: :Vegetables

Price per SU / KG / CU

1 = € 37,50 = € 2,50 = € 1,25

3 = € 36,00 = € 2,40 = € 1,20 = -4%

10 = € 34,50 = € 2,30 = € 1,15 = -8%

FROM € 1,15 PER CU!



8780-001 Tasty Garden Eggs 22 x
500g -CM

Species: :Solanum aethiopicum

Price per SU / KG / CU

1 = € 27,50 = € 2,50 = € 1,25

3 = € 26,40 = € 2,40 = € 1,20 = -4%

10 = € 25,30 = € 2,30 = € 1,15 = -8%

FROM € 1,15 PER CU!



8781 Garden Eggs / Eggplants 22 x
500 gr-CM

Species: :Vegetables

Price per SU / KG / CU

1 = € 27,50 = € 2,50 = € 1,25

3 = € 26,40 = € 2,40 = € 1,20 = -4%

10 = € 25,30 = € 2,30 = € 1,15 = -8%

FROM € 1,15 PER CU!



8905-001 Sujitha Shredded Coconut
36 x 400g -IN

Species: :Cocos nucifera

Price per SU / KG / CU

1 = € 50,40 = € 3,50 = € 1,40

1 = € 50,40 = € 3,50 = € 1,40



8935.12 Saro Sliced Jackfruit
Blanched 24 x 400g -IN

Price per SU / KG / CU

1 = € 28,44 = € 2,96 = € 1,19

3 = € 27,36 = € 2,85 = € 1,14 = -4%

10 = € 25,92 = € 2,70 = € 1,08 = -9%

FROM € 1,08 PER CU!



8935.13 Saro Parippuvada 24 x 400g
-IN

Price per SU / KG / CU

1 = € 27,60 = € 2,88 = € 1,15

3 = € 25,20 = € 2,63 = € 1,05 = -9%

FROM € 1,05 PER CU!



8935.14 Saro Uzhunuvada 24 x
400g -IN

Price per SU / KG / CU

1 = € 28,80 = € 3,00 = € 1,20

3 = € 26,40 = € 2,75 = € 1,10 = -8%

10 = € 23,76 = € 2,48 = € 0,99 = -18%

FROM € 0,99 PER CU!



8935.15 Saro Black Halwa 24 x 400g
-IN

Price per SU / KG / CU

1 = € 45,60 = € 4,75 = € 1,90

3 = € 43,20 = € 4,50 = € 1,80 = -5%

10 = € 42,00 = € 4,38 = € 1,75 = -8%

FROM € 1,75 PER CU!



8935.16 Saro Jackfruit Halwa 24 x
400g -IN

Price per SU / KG / CU

1 = € 45,60 = € 4,75 = € 1,90

3 = € 43,20 = € 4,50 = € 1,80 = -5%

10 = € 42,00 = € 4,38 = € 1,75 = -8%

FROM € 1,75 PER CU!



8660-002 Dunya Frozen Broad Beans
Peeled 20 x 400gr - EG

Species: :Vicia Faba
Price per SU / KG / CU
1 = € 17,80 = € 2,23 = € 0,89



8665.7 Dunya Frozen Peeled Broad
Beans 20 x 400g -EG

Species: :Vicia Faba
Price per SU / KG / CU
1 = € 17,80 = € 2,23 = € 0,89



8667-001 Dunya Okra Zero 20 x
400g -EG

Species: :Abelmoschus Esculentus
Price per SU / KG / CU
1 = € 21,80 = € 2,73 = € 1,09



8669 Frozen Chopped Okra 25 x
500g-CM

Species: :Vegetables
Price per SU / KG / CU
1 = € 48,75 = € 3,90 = € 1,95



8671 Frozen Ground / Chopped Okra
25 x 500g-CM

Species: :Vegetables
Price per SU / KG / CU
1 = € 45,00 = € 3,60 = € 1,80



8706.1 Iru / Ogiri / Dawa Dawa /
Fermented Locust 160 x 80 ...

Species: :Vegetables
Price per SU / KG / CU
1 = € 126,40 = € 9,88 = € 0,79
2 = € 121,60 = € 9,50 = € 0,76 = -4%
3 = € 118,40 = € 9,25 = € 0,74 = -6%
10 = € 110,40 = € 8,63 = € 0,69 = -13%

FROM € 0,69 PER CU!



8708.1 Ugba / Egusi 42 x 300 grs-CM
(24-11-2024)

Species: :Vegetables
Price per SU / KG / CU
1 = € 70,56 = € 5,60 = € 1,68
3 = € 65,52 = € 5,20 = € 1,56 = -7%
10 = € 59,85 = € 4,75 = € 1,43 = -15%

FROM € 1,43 PER CU!



8935.17 Saro Drumsticks Blanched 24
x 400g -IN

Price per SU / KG / CU
1 = € 31,20 = € 3,25 = € 1,30



8935.25 Saro Sambar Mix 24 x 400g
-IN

Price per SU / KG / CU
1 = € 26,16 = € 2,73 = € 1,09
3 = € 23,76 = € 2,48 = € 0,99 = -9%
10 = € 21,60 = € 2,25 = € 0,90 = -17%

FROM € 0,90 PER CU!



8935.29 Saro Cut Long Beans Blanched
24 x 400g -IN

Price per SU / KG / CU

1 = € 22,80 = € 2,38 = € 0,95

3 = € 20,40 = € 2,13 = € 0,85 = -11%

FROM € 0,85 PER CU!



8935.30 Saro Long Chilli Blanched 24
x 400g -IN

Price per SU / KG / CU

1 = € 33,60 = € 3,50 = € 1,40

3 = € 31,20 = € 3,25 = € 1,30 = -7%

10 = € 28,80 = € 3,00 = € 1,20 = -14%

FROM € 1,20 PER CU!



8689 VivAsie Taroheads half cut 10 x
1 Kg -VN

Species: :Vegetables

Price per SU / KG / CU

1 = € 23,90 = € 2,39 = € 2,39
3 = € 22,90 = € 2,29 = € 2,29 = -4%
10 = € 21,90 = € 2,19 = € 2,19 = -8%
60 = € 20,90 = € 2,09 = € 2,09 = -13%
180 = € 19,90 = € 1,99 = € 1,99 = -17%

FROM € 1,99 PER KG!



8714 Ekwang 15 x 1 Kg -CM

Species: :Vegetables

Price per SU / KG / CU

1 = € 58,50 = € 3,90 = € 3,90
3 = € 55,50 = € 3,70 = € 3,70 = -5%
10 = € 54,00 = € 3,60 = € 3,60 = -8%
63 = € 52,50 = € 3,50 = € 3,50 = -10%

FROM € 3,50 PER KG!



8720-001 Tasty Attieke / Cassava
Couscous IWP 30 x 500g -CI

Species: :Manihot esculenta

Price per SU / KG / CU

1 = € 31,50 = € 2,10 = € 1,05
3 = € 29,25 = € 1,95 = € 0,98 = -7%
10 = € 27,75 = € 1,85 = € 0,93 = -12%
54 = € 26,25 = € 1,75 = € 0,88 = -17%
162 = € 24,75 = € 1,65 = € 0,83 = -21%

FROM € 0,83 PER CU!



8720-002 Tasty Attieke / Cassava
Couscous IWP 12 x 1200g -CI

Species: :Manihot esculenta

Price per SU / KG / CU

1 = € 29,52 = € 2,05 = € 2,46
3 = € 27,36 = € 1,90 = € 2,28 = -7%
10 = € 25,92 = € 1,80 = € 2,16 = -12%
77 = € 25,20 = € 1,75 = € 2,10 = -15%
231 = € 24,48 = € 1,70 = € 2,04 = -17%

FROM € 1,70 PER KG!



8722.2 Attieke / Cassava Couscous
Ivory Coast 30 x 500 gr -...

Species: :Vegetables

Price per SU / KG / CU

1 = € 31,50 = € 2,10 = € 1,05
3 = € 30,00 = € 2,00 = € 1,00 = -5%
10 = € 28,50 = € 1,90 = € 0,95 = -10%
60 = € 27,00 = € 1,80 = € 0,90 = -14%
180 = € 25,50 = € 1,70 = € 0,85 = -19%
300 = € 24,00 = € 1,60 = € 0,80 = -24%

FROM € 0,80 PER CU!



8730-003 Tasty Round
Bobolo/Cassave sticks 3pcs 25 x 1kg
-CM

Species: :Manihot esculenta

Price per SU / KG / CU

1 = € 57,50 = € 2,30 = € 2,30



8733-001 Tasty Long Bobolo/Cassave
sticks 3pcs 20 x 1kg -CM

Species: :Manihot esculenta

Price per SU / KG / CU

1 = € 42,00 = € 2,10 = € 2,10
3 = € 41,00 = € 2,05 = € 2,05 = -2%
10 = € 39,00 = € 1,95 = € 1,95 = -7%
24 = € 38,00 = € 1,90 = € 1,90 = -10%
72 = € 37,00 = € 1,85 = € 1,85 = -12%

FROM € 1,85 PER KG!



8738.1 Kwanga/cassavabread/pain de
manioc 40 pcs (500g) pcs...

Species: :Vegetables

Price per SU / KG / CU

1 = € 38,00 = € 1,90 = € 0,95
3 = € 36,00 = € 1,80 = € 0,90 = -5%
10 = € 35,00 = € 1,75 = € 0,88 = -8%
36 = € 34,00 = € 1,70 = € 0,85 = -11%
108 = € 33,00 = € 1,65 = € 0,83 = -13%

FROM € 0,83 PER CU!



8740-001 Tasty Kwanga /
Cassavabread IWP 40 x 500g -CM

Species: :Manihot esculenta

Price per SU / KG / CU

1 = € 38,00 = € 1,90 = € 0,95



8742.1 Nsessa
Kwanga/Cassavabread/pain manioc
100x250g-CM

Species: :Vegetables
Price per SU / KG / CU
1 = € 60,00 = € 2,40 = € 0,60



8750 Miondo 15 x 1 Kilo -CM

Species: :Vegetables
Price per SU / KG / CU
1 = € 31,50 = € 2,10 = € 2,10



8750-001 Tasty Miondo 15 x 1kg
-CM

Species: :Manihot esculenta
Price per SU / KG / CU
1 = € 31,50 = € 2,10 = € 2,10



8765-003 Tasty Placali /
Cassavedough 12 x 1200g -CM

Species: :Manihot esculenta
Price per SU / KG / CU
1 = € 27,36 = € 1,90 = € 2,28
3 = € 26,64 = € 1,85 = € 2,22 = -3%
10 = € 25,92 = € 1,80 = € 2,16 = -5%
20 = € 25,20 = € 1,75 = € 2,10 = -8%
54 = € 24,48 = € 1,70 = € 2,04 = -11%
162 = € 23,76 = € 1,65 = € 1,98 = -13%

FROM € 1,65 PER KG!



8790-001 Tasty White Gari 4 x 4kg
-CM

Species: :Manihot esculenta
Price per SU / KG / CU
1 = € 28,00 = € 1,75
3 = € 26,40 = € 1,65 = -6%
10 = € 25,60 = € 1,60 = -9%



8857-001 烤红薯 Baked Sweet Potato
15 x 650gr - CN

Species: :Ipomoea batatas
Price per SU / KG / CU
1 = € 36,00 = € 3,08 = € 2,40



8909-001 Sujitha Cut Cassava Root
12 x 1kg -IN

Species: :Manihot esculenta
Price per SU / KG / CU
1 = € 19,80 = € 1,65 = € 1,65
3 = € 18,00 = € 1,50 = € 1,50 = -9%
10 = € 16,20 = € 1,35 = € 1,35 = -18%
56 = € 15,00 = € 1,25 = € 1,25 = -24%

FROM € 1,25 PER KG!



8909-002 Sujitha Cassava Sticks 12 x
1kg -IN

Species: :Manihot esculenta
Price per SU / KG / CU
1 = € 21,00 = € 1,75 = € 1,75
3 = € 19,20 = € 1,60 = € 1,60 = -9%
10 = € 17,40 = € 1,45 = € 1,45 = -17%
56 = € 16,20 = € 1,35 = € 1,35 = -23%

FROM € 1,35 PER KG!



8935.26 Saro Shallot Peeled Blanched
24 x 400g -IN

Price per SU / KG / CU
1 = € 31,20 = € 3,25 = € 1,30
3 = € 28,80 = € 3,00 = € 1,20 = -8%

FROM € 1,20 PER CU!



8841-001 TYJ Spring Roll Pastry
125mm 50 leaves 40 x 250g-SG

Price per SU / KG / CU

1 = € 60,00 = € 6,00



8841-002 TYJ Spring Roll Pastry
150mm 50 leaves 40 x 400g-SG

Price per SU / KG / CU

1 = € 72,00 = € 4,50



8841-004 TYJ Spring Roll Pastry
215mm 40 leaves 20 x 550g-SG

Price per SU / KG / CU

1 = € 44,00 = € 4,00 = € 2,20



8853-001 葱香手抓饼 Puff Paratha
Chive 100g/pc INT 18 x ...

Species: :Roti

Price per SU / KG / CU

1 = € 30,60 = € 3,40 = € 1,70

3 = € 28,80 = € 3,20 = € 1,60 = -6%

10 = € 27,00 = € 3,00 = € 1,50 = -12%

56 = € 26,10 = € 2,90 = € 1,45 = -15%

FROM € 1,45 PER CU!



8853-002 香酥手抓饼 Puff Paratha
Sesame Crispy 100g/pc I...

Species: :Roti

Price per SU / KG / CU

1 = € 29,70 = € 3,30 = € 1,65

3 = € 27,90 = € 3,10 = € 1,55 = -6%

10 = € 26,10 = € 2,90 = € 1,45 = -12%

56 = € 25,20 = € 2,80 = € 1,40 = -15%

FROM € 1,40 PER CU!



8854-001 韭菜馅饼 Leek Filling
Pancake 115gr/pc 10 x 460g...

Species: :Pancakes

Price per SU / KG / CU

1 = € 30,00 = € 6,52 = € 3,00

3 = € 28,00 = € 6,09 = € 2,80 = -7%

10 = € 26,00 = € 5,65 = € 2,60 = -13%

FROM € 2,60 PER CU!



8854-002 上海葱油饼 Scallion
Pancake 90g/pc 16 x 450g - ...

Species: :Pancakes

Price per SU / KG / CU

1 = € 28,00 = € 3,89 = € 1,75

3 = € 26,40 = € 3,67 = € 1,65 = -6%

10 = € 24,80 = € 3,44 = € 1,55 = -11%

FROM € 1,55 PER CU!



8856.1 扬州干丝 Soya Bean Slices 25
x 227g - CN

Price per SU / KG / CU

1 = € 32,80 = € 4,56 = € 1,31



8860-001 Sujitha Malabar Porotta 36
x 375 -IN

Species: :Roti

Price per SU / KG / CU

1 = € 31,45 = € 2,33 = € 0,87



8860-002 Sujitha Malabar Porotta
Family Pack 24 x 750g -IN

Species: :Roti

Price per SU / KG / CU

1 = € 38,40 = € 2,13 = € 1,60



8860-003 Sujitha Malabar Porotta
Family Pack 8 x 2kg -IN

Species: :Roti

Price per SU / KG / CU

1 = € 28,00 = € 1,75 = € 3,50



8870-001 Sujitha Malabar Cut Porotta
20 x 1kg -IN

Species: :Roti

Price per SU / KG / CU

1 = € 35,00 = € 1,75 = € 1,75
3 = € 33,00 = € 1,65 = € 1,65 = -6%
10 = € 31,00 = € 1,55 = € 1,55 = -11%
38 = € 30,00 = € 1,50 = € 1,50 = -14%

FROM € 1,50 PER KG!



8870-002 Sujitha Malabar Cut Porotta
10 x 2kg -IN

Species: :Roti

Price per SU / KG / CU

1 = € 35,00 = € 1,75 = € 3,50
3 = € 33,00 = € 1,65 = € 3,30 = -6%
10 = € 31,00 = € 1,55 = € 3,10 = -11%

FROM € 1,55 PER KG!



8870-003 Sujitha Malabar Cut Porotta
6 x 3kg -IN

Species: :Roti

Price per SU / KG / CU

1 = € 27,00 = € 1,50 = € 4,50



8870.1 Sujitha Cut Porotta 6 x 3000 g
-IN

Price per SU / KG / CU

1 = € 27,00 = € 1,50 = € 4,50



8935.18 Saro Appalam 60 x 200g -IN

Price per SU / KG / CU

1 = € 45,00 = € 3,75 = € 0,75



8935.32 Saro Palappam 24 x 400g
-IN

Price per SU / KG / CU

1 = € 23,76 = € 2,48 = € 0,99
3 = € 21,36 = € 2,23 = € 0,89 = -10%
10 = € 18,96 = € 1,98 = € 0,79 = -20%

FROM € 0,79 PER CU!



8020-001 Ibercook Panko Prawns
Garlic/Parsley IQF 4 x 1kg -ES

Species: :Dosodicus gigas

Price per SU / KG / CU

1 = € 18,00 = € 4,50 = € 4,50

3 = € 17,20 = € 4,30 = € 4,30 = -4%

10 = € 16,40 = € 4,10 = € 4,10 = -9%

FROM € 4,10 PER KG!



8911 Sujitha Extra Hot Mixture 36 x
200 g -IN

Price per SU / KG / CU

1 = € 18,00 = € 2,50 = € 0,50

3 = € 16,20 = € 2,25 = € 0,45 = -10%

10 = € 14,40 = € 2,00 = € 0,40 = -20%

20 = € 12,60 = € 1,75 = € 0,35 = -30%

FROM € 0,35 PER CU!



8912 Sujitha Hot Mixture 36 x 200 g
-IN

Price per SU / KG / CU

1 = € 18,00 = € 2,50 = € 0,50

3 = € 16,20 = € 2,25 = € 0,45 = -10%

10 = € 14,40 = € 2,00 = € 0,40 = -20%

20 = € 12,60 = € 1,75 = € 0,35 = -30%

FROM € 0,35 PER CU!



8916.1 Sujitha Cassava Chips (Hot) 20
x 150 g -IN

Price per SU / KG / CU

1 = € 11,00 = € 3,67 = € 0,55

3 = € 10,00 = € 3,33 = € 0,50 = -9%

10 = € 9,40 = € 3,13 = € 0,47 = -15%

20 = € 8,80 = € 2,93 = € 0,44 = -20%

FROM € 0,44 PER CU!



8917 Sujitha Cassava Chips (Extra
Hot) Jar 20 x 150 g -IN

Price per SU / KG / CU

1 = € 13,80 = € 4,60 = € 0,58

3 = € 10,00 = € 3,33 = € 0,42 = -28%

10 = € 9,40 = € 3,13 = € 0,39 = -32%

20 = € 8,80 = € 2,93 = € 0,37 = -36%

FROM € 0,37 PER CU!



8919 Sujitha Banana Chips Spicy 36 x
150 g -IN

Price per SU / KG / CU

1 = € 21,60 = € 4,00 = € 0,60

3 = € 19,80 = € 3,67 = € 0,55 = -8%

10 = € 18,00 = € 3,33 = € 0,50 = -17%

20 = € 16,20 = € 3,00 = € 0,45 = -25%

FROM € 0,45 PER CU!



8922.1 Sujitha Rice Murukku 36 x
150 g -IN

Price per SU / KG / CU

1 = € 21,60 = € 4,00 = € 0,60

1 = € 21,60 = € 4,00 = € 0,60



8924 Sujitha Karaseva 36 x 150 g -IN

Price per SU / KG / CU

1 = € 21,60 = € 4,00 = € 0,60

3 = € 19,80 = € 3,67 = € 0,55 = -8%

10 = € 18,00 = € 3,33 = € 0,50 = -17%

FROM € 0,50 PER CU!



8935.23 Saro Sukhiyan 24 x 375g -IN

Price per SU / KG / CU

1 = € 34,80 = € 3,87 = € 1,45

3 = € 31,20 = € 3,47 = € 1,30 = -10%

10 = € 28,80 = € 3,20 = € 1,20 = -17%

FROM € 1,20 PER CU!



8962-001 五香小素鸡 Spiced
Vegetarian Chicken VP 60 x 12...

Price per SU / KG / CU

1 = € 65,40 = € 8,28 = € 1,09

3 = € 59,40 = € 7,52 = € 0,99 = -9%

FROM € 0,99 PER CU!



8963-001 迷你小素肠 Vegetarian
Sausages IQF 30 x 180g - ...

Price per SU / KG / CU

1 = € 31,50 = € 5,83 = € 1,05

3 = € 28,50 = € 5,28 = € 0,95 = -10%

10 = € 26,40 = € 4,89 = € 0,88 = -16%

FROM € 0,88 PER CU!



8989.4 Pumpkin pastries Meng Fu
蒙福 南瓜饼 7 x 900gr-...

Price per SU / KG / CU

1 = € 32,00 = € 5,08 = € 4,57



8990.4 羊肉卷 Shiinsan Lamb Rolls 12
x 400gr -GB

Price per SU / KG / CU

1 = € 64,00 = € 13,33 = € 5,33



8990.5 牛肉卷 Shiinsan Beef Rolls 12
x 400gr

Price per SU / KG / CU

1 = € 58,00 = € 12,08 = € 4,83



8991.1 Porkmeat Balls Meng Fu 16 x
360 grs -ES

Price per SU / KG / CU

1 = € 53,00 = € 9,20 = € 3,31



8991.2 Beef Meat Balls 蒙福 牛肉丸
Meng Fu 16 x 360 gr...

Price per SU / KG / CU

1 = € 58,00 = € 10,07 = € 3,63



8991.3 Stuffed Pork Loins Balls 蒙福
包心贡丸 Meng Fu...

Price per SU / KG / CU

1 = € 52,00 = € 9,03 = € 3,25



8991.5 Bread With Meat Filling 蒙福
小笼包 Meng Fu 8 x...

Price per SU / KG / CU

1 = € 32,00 = € 8,16 = € 4,00



8991.6 Stuffed Beef Balls 撒尿牛肉丸
Meng Fu 蒙福 16...

Price per SU / KG / CU

1 = € 58,00 = € 10,07 = € 3,63



8991.7 Fu Zhou Fishballs 蒙福
福州鱼丸 Meng Fu 14 x 4...

Price per SU / KG / CU

1 = € 65,00 = € 10,55 = € 4,64



8992-001 Chicken & Cabbage Gyoza
日式鸡肉球菜煎饺 IQF...

Species: :Dumplings

Price per SU / KG / CU

1 = € 32,50 = € 6,50



8992.0 Chicken Sausages 蒙福
脆皮亲亲肠 Meng Fu 16 x...

Price per SU / KG / CU

1 = € 58,00 = € 10,07 = € 3,63



8992.1 Wen Zhou Fish Strips Meng
Fu 14 x 360 grs -ES

Price per SU / KG / CU

1 = € 52,00 = € 10,32 = € 3,71



8993-002 Chinese Bread with cream
玉兔包 IQF 4 x1kg -IT

Species: :Dumplings

Price per SU / KG / CU

1 = € 24,00 = € 6,00



8994-001 Pork & Chives Dumplings
猪肉韭菜水饺 IQF 5 x 1...

Price per SU / KG / CU

1 = € 32,00 = € 6,40



5352-001 水晶虾饺 Kao Shrimp
Dumplings 32pcs 10 x 800g -V...

Species: :Dumplings
Price per SU / KG / CU
1 = € 63,60 = € 7,95 = € 6,36



7314-002 Delimare Frog Legs 8/12
IWP 12 x 800g 100% NW -VN

Species: :Hoplomatrachus rugulosus
Price per SU / KG / CU
1 = € 95,52 = € 9,95 = € 7,96



7409 Frozen Periwinkle 50 x 200 Gr
Bag-CM

Price per SU / KG / CU
1 = € 297,50 = € 29,75 = € 5,95
10 = € 289,50 = € 28,95 = € 5,79 = -3%
30 = € 285,00 = € 28,50 = € 5,70 = -4%
90 = € 279,50 = € 27,95 = € 5,59 = -6%

FROM € 5,59 PER CU!



7409.1 Frozen Periwinkle 25 x 200
Gr Bag-CM

Price per SU / KG / CU
1 = € 143,75 = € 28,75 = € 5,75



7415 Frozen African Snails 70 x 227
Gr Bag-CM

Species: :Achatina achatina
Price per SU / KG / CU
1 = € 416,50 = € 26,21 = € 5,95



7417 Frozen African Snails / Jumbo
Snails 24 x 907 Gr Bag...

Species: :Achatina achatina
Price per SU / KG / CU
1 = € 636,00 = € 29,22 = € 26,50
2 = € 622,80 = € 28,61 = € 25,95 = -2%
3 = € 612,00 = € 28,11 = € 25,50 = -4%

FROM € 25,50 PER CU!



8690 Frozen Sugar Cane Cutted &
Cleaned Hoa Binh 40 cm 10...

Species: :Vegetables
Price per SU / KG / CU
1 = € 5,90 = € 0,59 = € 5,90



8691 Sujitha Frozen Ripe Jackfruit
Whole Meat W/O Seed 20...

Species: :Vegetables
Price per SU / KG / CU
1 = € 25,00 = € 2,50 = € 1,25
3 = € 23,00 = € 2,30 = € 1,15 = -8%
10 = € 21,00 = € 2,10 = € 1,05 = -16%

FROM € 1,05 PER CU!



8692 Sujitha Frozen Ripe Jackfruit
Half Meat W/O Seed 20x...

Species: :Vegetables
Price per SU / KG / CU
1 = € 21,80 = € 2,18 = € 1,09
3 = € 20,80 = € 2,08 = € 1,04 = -5%
10 = € 18,80 = € 1,88 = € 0,94 = -14%
52 = € 17,80 = € 1,78 = € 0,89 = -18%

FROM € 0,89 PER CU!



8693 Sujitha Peeled Blanched
Jackfruit Seeds 20x500g-VN

Species: :Vegetables

Price per SU / KG / CU

1 = € 21,80 = € 2,18 = € 1,09

3 = € 19,80 = € 1,98 = € 0,99 = -9%

10 = € 18,80 = € 1,88 = € 0,94 = -14%

70 = € 17,80 = € 1,78 = € 0,89 = -18%

FROM € 0,89 PER CU!



8705 Kitterly 30 x 250 grs-CM

Species: :Vegetables

Price per SU / KG / CU

1 = € 39,38 = € 5,25 = € 1,31



8785-001 Calaba Chalk 100 x 170g
-CM

Species: :Calaba Chalk

Price per SU / KG / CU

1 = € 160,00 = € 9,41 = € 1,60



8855-001 薄百叶 Soy Sheet Thin 25 x
227gr -CN

Species: :Tofu

Price per SU / KG / CU

1 = € 44,75 = € 7,88 = € 1,79

3 = € 43,75 = € 7,70 = € 1,75 = -2%

10 = € 42,25 = € 7,44 = € 1,69 = -6%

FROM € 1,69 PER CU!



8855-002 厚百叶 Soy Sheet Thick 30
x 227g -CN

Species: :Tofu

Price per SU / KG / CU

1 = € 38,00 = € 5,58 = € 1,27



8855-003 扬州干丝 Soy Sheet Slice 25
x 227g -CN

Species: :Tofu

Price per SU / KG / CU

1 = € 36,25 = € 6,38 = € 1,45

3 = € 33,75 = € 5,94 = € 1,35 = -7%

10 = € 31,25 = € 5,50 = € 1,25 = -14%

FROM € 1,25 PER CU!



8855-004 百页结 Soy Sheet Knots 28
x 227g -CN

Species: :Tofu

Price per SU / KG / CU

1 = € 47,60 = € 7,50 = € 1,70

3 = € 46,20 = € 7,28 = € 1,65 = -3%

10 = € 45,00 = € 7,09 = € 1,61 = -5%

FROM € 1,61 PER CU!



8856-001 小油豆腐 Fried Bean Curd
25 x 150g - CN

Species: :Bean Curd

Price per SU / KG / CU

1 = € 35,00 = € 9,33 = € 1,40

3 = € 33,75 = € 9,00 = € 1,35 = -4%

10 = € 32,50 = € 8,67 = € 1,30 = -7%

20 = € 31,25 = € 8,33 = € 1,25 = -11%

FROM € 1,25 PER CU!



8935.19 Saro Kumbilappam 24 x
375g -IN

Price per SU / KG / CU

1 = € 32,40 = € 3,60 = € 1,35

3 = € 28,80 = € 3,20 = € 1,20 = -11%

10 = € 27,60 = € 3,07 = € 1,15 = -15%

FROM € 1,15 PER CU!



8935.20 Saro Idiyappam White 24 x
375g -IN

Price per SU / KG / CU

1 = € 28,80 = € 3,20 = € 1,20
3 = € 25,20 = € 2,80 = € 1,05 = -13%
10 = € 22,80 = € 2,53 = € 0,95 = -21%

FROM € 0,95 PER CU!



8935.21 Saro Idiyappam Brown 24 x
375g -IN

Price per SU / KG / CU

1 = € 27,60 = € 3,07 = € 1,15
3 = € 25,20 = € 2,80 = € 1,05 = -9%
10 = € 22,80 = € 2,53 = € 0,95 = -17%

FROM € 0,95 PER CU!



8935.22 Saro Madras Idly 12 x 908g
-IN

Price per SU / KG / CU

1 = € 31,20 = € 2,86 = € 2,60
3 = € 28,80 = € 2,64 = € 2,40 = -8%
10 = € 27,00 = € 2,48 = € 2,25 = -13%

FROM € 2,25 PER CU!



9057-001 Jona Izumidai Tilapia Slice
20 x 8g Tray 25 x 160g -...

Species: :Oreochromis Niloticus

Price per SU / KG / CU

1 = € 85,00 = € 21,25 = € 3,40



9065.1 JONA Capelin Roe Wasabi
(green) Masago 12x500 gr-CN

Species: :Sushi

Price per SU / KG / CU

1 = € 59,70 = € 9,95 = € 4,98
3 = € 57,00 = € 9,50 = € 4,75 = -5%
10 = € 53,70 = € 8,95 = € 4,48 = -10%

FROM € 4,48 PER CU!



9070 Wakame Seeweedsalad
marinated Vacuum 10 x 1 kilo-CN

Species: :Undaria pinnatifida

Price per SU / KG / CU

1 = € 39,50 = € 3,95 = € 3,95



9071-001 Jona Wakame
Seeweedsalad Marinated VP 10 x 1kg
-CN

Species: :Undaria pinnatifida

Price per SU / KG / CU

1 = € 37,50 = € 3,75 = € 3,75
3 = € 34,50 = € 3,45 = € 3,45 = -8%
10 = € 32,50 = € 3,25 = € 3,25 = -13%
20 = € 31,50 = € 3,15 = € 3,15 = -16%
72 = € 30,50 = € 3,05 = € 3,05 = -19%
216 = € 29,50 = € 2,95 = € 2,95 = -21%

FROM € 2,95 PER KG!

Index By Product SKU

SKU	beschrijving	Pg No.
1028	Barracuda WR 200-500 g 10 kg - SU(Fish)	3
1029	JONA Barracuda WR 300-500 gr 1 x 10 kg IQF/IWP-IN(Fish)	3
1029.2	JONA Barracuda WR 300-500 gr 1 x 10 kg IQF/IWP 10% -VN(Fish)	3
1029.3	Jona Baby Barracuda WR 50-150 gr 5 x 2 kg 10% -VN(Fish)	3
1031	JONA Barracuda WR 500-1000 gr 1 x 10 kg IQF/IWP-IN(Fish)	3
1042.1	Jona Barracuda WR 5000 gr up 1 x 25 kg IQF/IWP-IN(Fish)	3
1047-001	Jona Boal WG 1-2kg IWP 1 x 20kg 10% -IN(Fish)	3
1047-002	Jona Boal WG 1-2kg IWP 1 x 21kg 10% -IN(Fish)	3
1048-001	Jona Boal WG 2-3kg IWP 1 x 20kg 10% -IN(Fish)	3
1048-002	Jona Boal WG 2-3kg IWP 1 x 21kg 10% -IN(Fish)	4
1048-003	Jona Boal WG 2-3kg IWP 1 x 22kg 10% -IN(Fish)	4
1049-001	Jona Boal WG 3-4kg IWP 1 x 20kg 10% -IN(Fish)	4
1049-002	Jona Boal WG 3-4kg IWP 1 x 21kg 10% -IN(Fish)	4
1049-003	Jona Boal WG 3-4kg IWP 1 x 22kg 10% -IN(Fish)	4
1049-004	Jona Boal WG 3-4kg IWP 1 x 23kg 10% -IN(Fish)	4
1050-001	Jona Boal WG 4-5kg IWP 1 x 20kg 10% -IN(Fish)	4
1050-003	Jona Boal WG 4-5kg IWP 1 x 22kg 10% -IN(Fish)	4
1073-003	Dorade/Seabream WGS 200-300g IQF 1 x5kg 25% -TR(Fish)	4
1100-005	Sea Catfish (Barbaman) WR 200-500g 1x 20kg -SR(Fish)	5
1101-001	Jona Catfish WG 300-500g IPB 1 x 4kg 20% -ID(Fish)	5
1109.1	Jona Ceylon Chooperai/Yellowstr. Trev WR 50 gr+ 1 x 10 Kg-LK(Fish)	5
1113-001	Jona Chooperai WR 10/20 IQF 10 x 1kg 10% -IN(Fish)	5
1113-002	Jona Chooperai WR 20/40 IQF 10 x 1kg 10% -IN(Fish)	5
1113.1	Chooperai/Yellowstripe trevally WR 40/50 10x1 Kg IQF-IN(Fish)	5
1125	Catla Gutted IWP 5 kg+ 22 kg -MM(Fish)	5
1125.1	Catla Gutted IWP 5 kg+ 24 kg -MM(Fish)	5
1125.7	Catla Gutted IWP 5 kg+ 27 kg -MM(Fish)	5
1127	Catla Gutted IWP 7 +Kg 22 kg -MM(Fish)	6
1130	Catla Gutted IWP 7 +Kg 24 Kg -MM(Fish)	6
1130.2	Catla Gutted IWP 7 +Kg 27 Kg -MM(Fish)	6
1232	Hilsa Whole round IWP IQF 300/500 gr 1 x 10 Kg-IN(Fish)	6
1245-102	Jack/Horse Mackerel WR 300-500g Block 1 x 20kg -CL(Fish)	6
1258-001	Horse Mackerel WR 350g-UP Block 1 x 20kg -GB(Fish)	6
1265.1	Indische horsmakreel / Torpedo horsmakreel 2-3 stuks 10x1 kg(Fish)	6
1285-004	Ocean Delight Kingfish WG 375-900g IQF 1 x 10kg -SR(Fish)	6
1285.2	JONA Kingfish (Scomberomorus Spp) WG 400-900 g 10 kg IQF-SR(Fish)	6
1290-001	Jona Kingfish WG 1-2kg IPB 1 x 20kg 5% -SR(Fish)	7
1375-002	Pelagos Mackerel WR 400-600gr Block 2 x 12,5kg -FO(Fish)	7
1390	Milkfish WR 300/500 grs IQF/IWP 10 kg 20%-ID(Fish)	7
1390.1	Milkfish WR 300/500 grs IQF/IWP 10 kg 10%-ID(Fish)	7
1395	Milkfish WR 500-800 grs IQF/IWP 10 kg 10%-ID(Fish)	7
1396	Milkfish WR 800 gr+ IQF/IWP 10 kg-ID(Fish)	7
1400	Mrigal gutted 2-3 kg 20 kg-MM(Fish)	7
1400.8	Mrigal Gutted 3 kg+ 20 kg-MM(Fish)	7

1402	Mrigal Guttred 3 kg+ 22 kg-MM(Fish)	7
1410	Jona Indian Mackerel WR 6/8 pc/kg 10 x 1 Kg-IN(Fish)	8
1415	Indian Mackerel WR 8/10 pc/kg 10 x 1 Kg-IN(Fish)	8
1439.4	Jona Red Mullet Indian WR IQF 500-700 Gr 10 Kg-OM(Fish)	8
1439.6	Jona Red Mullet Indian WR IQF 1-2 Kg 10 Kg-OM(Fish)	8
1460-001	Jona Pangasius WG 500-1000g IPB 1 x 5 kg 20% -VN(Fish)	8
1486-001	Jona Black Pomfret WR 400-500g IWP 1 x 5kg 20% -ID(Fish)	8
1488.6	Jona Black Pomfret WR 500g-UP IWP 1 x 5kg 20% -ID(Fish)	8
1489.3	Black Pomfret WR 200-300 Gr 10 x 1 kg 10%-BD(Fish)	8
1495-001	Jona Silver Pomfret WR 80-100g IQF 10 x 1 kg 20% -CN(Fish)	8
1495-002	Jona Silver Pomfret WR 100-120g IQF 10 x 1 kg 20% -CN(Fish)	9
1506-001	Ultimate Taste Golden Pomfret WR 500-600g IPB 1 x 6kg 20%-CN(Fish)	9
1540-001	Jona Rabbit fish Otti WR O/R IQF 10 x 1kg 10% -IN(Fish)	9
1544	Jona Rabbit Fish (Otti) WR IQF 100 gr+ 10 x 1 Kg.-IN(Fish)	9
1563-001	Ultimate Taste Argentinian Seabass WR 1kg-UP 1 x 10kg 10% -AR(Fish)	9
1576-001	Jona Malabar Grouper WR IWP 15kg -LK(Fish)	9
1581.3	Reefcod/Tsof/Grouper WGS 300-500 4 x 3 Kg 10%-IN(Fish)	9
1581.4	Reefcod/Tsof/Grouper WGS 500-700 4 x 3 Kg 10%-IN(Fish)	9
1582.4	Reefcod/Tsof/Grouper WR 300/500 10 Kg IWP 100% NW-IN(Fish)	9
1583.3	Reefcod/Tsof/Grouper Spotted WGS 300/500 4x3 Kg IWP 10%-IN(Fish)	10
1583.4	Reefcod/Tsof/Grouper Spotted WGS 500-700 4 x 3 Kg 10%-IN(Fish)	10
1643-001	Jona Ribbon Fish WR A-Grade 300-500g IWP 1 x10kg -IN(Fish)	10
1643-002	Jona Ribbon Fish WR A-Grade 500-700g IWP 1 x10kg -IN(Fish)	10
1643-003	Jona Ribbon Fish WR A-Grade 700-1000g IWP 1 x10kg -IN(Fish)	10
1670-017	DSD Rohu gutted 2000g-UP IWP 1 x 20kg 20%-MM(Fish)	10
1671-001	DSD Rohu Back Guttred 2000g-UP IWP 1 x 20kg 20% -MM(Fish)	10
1680	Burro/Rubberlip Grunts Mixed WR IWP 22 kg-ES(Fish)	10
1700-001	Pink Salmon WR O/R IQF 1 x 25kg -CA(Fish)	10
1702-001	Chinook Salmon HG 4-7lb IQF 1 x 25kg -CA(Fish)	11
1702-002	Chinook Salmon HG 7-10lb IQF 1 x 25kg -CA(Fish)	11
1703.1	Jona Ceylon White Sardinella WR 30-100g 10 X 1 Kg IQF 15%-LK(Fish)	11
1710-001	Jona Sardines WR 18/24 IQF 10 x 1kg 20% -PT(Fish)	11
1719.5	Jona Seabass Whole Guttred IQF 400/600 grs 5 Kg 25%-TR(Fish)	11
1731-003	Snapper/Besugo WR 800-1000gr 1 x 10kg semi IQF-AR(Fish)	11
1731-004	Snapper/Besugo WR 600-1000gr 1 x 10kg semi IQF-AR(Fish)	11
1788	Jona Ceylon Sengani Fish 200-800 grs WR 5 x 2 kilo 15%-LK(Fish)	11
1814	Dory Snappers/Black Spot Seaperch 0.2 - 1 kg 5 x 2 kg 15%-LK(Fish)	11
1832	Jona Ceylon Kingsnappers / Jobfish 200-1000g 2 x 5kg 15%- LK(Fish)	12
1835.2	Lane Snappers (Lutj.Synagris) 200g-UP WGS IQF 10 x 1kg -SR(Fish)	12
1850-001	DSD Tilapia WGS 300-500g IWP 1 x 4kg 20% -TH(Fish)	12
1860-005	DSD Tilapia WGS 300-500g IWP 1 x 4kg 20% -CN(Fish)	12
1860-006	DSD Tilapia WGS 500-800g IWP 1 x 4kg 20% -CN(Fish)	12
1860-016	DSD Tilapia WGS 800g-UP IWP 1 x 5kg 20% -CN(Fish)	12
1862	Tilapia G&S 500-800 gr 4 kg 20%-CN(Fish)	12
1879-001	OD Trevally/Blue Runner WR 300-800g IQF 1 x 10 kg -SR(Fish)	12
1881-002	Jona Trevally/Cavalli WG 3-5kg IPB 1 x 20kg -SR(Fish)	12
1882-001	OD Trevalli/Cavalli WR 300-700g IQF 1 x 10kg -SR(Fish)	13

1884-001	Jona Trevally / Parai WR 1-2kg IWP 15kg 15% -LK(Fish)	13
1884-002	Jona Trevally / Parai WR 2000g-UP IPB 1 x 15kg 15% -LK(Fish)	13
1887.3	Jona Ceylon Trevally (Caranx Sp) WR 0.1-0.5 kg 2 x 5 kg-LK(Fish)	13
1921-003	Little Tunny 2000-3000g IWP 1 x 10kg -IN(Fish)	13
1950	Yellow Croakers G&S 300-500 gr 10 x 1 kg IQF-SR(Fish)	13
1961	Yellow Croakers WR 500-1000 gr 1 x 10 kg IQF-SR(Fish)	13
1970	Yellow Croakers WG 500-1000 gr 1 x 10 kg IQF-SR(Fish)	13
1985.2	Yellow Tail Scad Whole / Atule Mate 4-6 pcs 10 x 1 kg 10%-IN(Fish)	13
1985.3	Yellow Tail Scad Whole / Atule Mate 6-8p VAC 10x1 kg 10%-VN(Fish)	14
2011	Barracuda Steaks Jona Skin On 100-250 g 10 x 1 Kg-IN(Fish)	14
2070	Jona Blue Shark Steaks Skin On 100-300 gr IQF 8x1 Kg 20%-PT(Fish)	14
2120	Kandratiki/Croaker steaks skinon 100-300 gr 10 x 1 kg-SR(Fish)	14
2120-001	Jona African Style Kandratiki H/O Steak IQF 10 x 1kg 20%-PT(Fish)	14
2130	JONA Kingfish steaks skin on 75-250 gr 10 x 1 kg IQF-SR(Fish)	14
2130-001	Jona Kingfish Steak 20-150g S/ON IQF 10 x 1kg 10% -SR(Fish)	14
2170	Jona Halibut Steaks 5 x 1 kg 20%-GL(Fish)	14
2170-001	Jona Halibut steaks IQF 5 x 1kg 20% -GL(Fish)	14
2186-001	Jona Malabar Grouper Steak IQF 10 x 1 kg 15% -LK(Fish)	15
2188-001	OD Papoena/Grouper Steaks 80-200g IQF 10 x 1kg -SR(Fish)	15
2234-001	Jona Chinook Salmon Steaks 2.5cm IQF 10 x 1kg 20% -PT(Fish)	15
2234-002	Jona Chinook Salmon Steaks offcut 14 kg-PT(Fish)	15
2235-002	Jona Pink Salmon Steaks offcuts 14 kilo-PT(Fish)	15
2236-001	Jona Chum Salmon Steaks 2.5cm IQF 10 x 1kg 20% -PT(Fish)	15
2236-002	Jona Chum Salmon Steaks offcuts 14 kg -PT(Fish)	15
2251-002	Jona Tilapia Steaks 150-250g VP 10 x 1kg 20% -CN(Fish)	15
2252-001	Ultimate Taste Red Tilapia Steaks 150-300g IQF 4x1kg 20% -CN(Fish)	15
2262-001	Jona Cavalli Steak 50-200g IQF 10 x 1kg 10% - SR(Fish)	16
2270	JONA Skipjack Tuna Steaks Skin on 200-400 gr 10 x 1 kg-IN(Fish)	16
2270.1	Bonito/Little Tunny/Kawa Kawa Steaks S.O. 100-300 10x1 kg-IN(Fish)	16
2273	JONA Yellowfin Tuna Steaks Skin on 200-400 grs 10 x 1 kg-IN(Fish)	16
2351	Salmon Portions Chain (Salmo Salar) 10 x (4 x 125gr)-NL(Fish)	16
2380	Untrimmed Pangafillets 170-230 gr 80% NW 10 x 1 kg -VN(Fish)	16
2380-001	Jona Untrimmed Pangasius Fillet 200-250g IQF 10 x 1kg 20%-VN(Fish)	16
2380-002	Jona Untrimmed Pangasius Fillet 3 pcs IQF 10 x 1kg 20%-VN(Fish)	16
2380-004	Jona Untrimmed Pangasius Fillet 5 pcs IQF 10 x 1kg 20%-VN(Fish)	16
2500	Smoked Barracuda rings bulk 1 x 5 kg IQF-SR(Fish)	17
2520	Smoked Catfish Kupila (M) IQF Butterfly 5 kg -SR(Fish)	17
2525-001	Jona Dried Catfish / Kupila Cuts 8 x 500g IQF-SR(Fish)	17
2532	Jona Dried Catfish Fillet IQF 50 x 80 gr-SR (19-07-2024)(Fish)	17
2540	Smoked Cat Fish rings small 5 kilo-SR(Fish)	17
2542	Jona Dried Cat Fish rings small 8 x 500 grs 4 kilo-SR(Fish)	17
2542-001	Jona Dried Catfish Barbaman Rings 100-160g IQF 8 x 500g -SR(Fish)	17
2550	Jona Smoked Catfish / Kupila steaks 1 x 5 Kg IQF-NL(Fish)	17
2560-001	Smoked Herring WG 200-350g MAP 3kg -NL(Fish)	17
4001.5	Jona Fresh Water shrimps HOSO 13/15 10 x 1 kg 20%-BD(Shrimps)	19
4070.1	Vannamei shrimps HOSO 20/30 12 x 1 kg 25% -ECUADOR(Shrimps)	19
4071-004	WB Vannamei shrimps HOSO 50/60 6 x 2kg 20% -EC(Shrimps)	19

4071.8	WD Premium Vannamei shrimps HOSO 30/40 6 x 2 kg 20% -EC(Shrimps)	19
4073.2	Jona Premium Vannamei shrimps HOSO RC 20/30 10x1 kg 20% -EC(Shrimps)	19
4073.3	Jona Premium Vannamei shrimps HOSO RC 30/40 10x1 kg 20% -EC(Shrimps)	19
4073.7	Jona Premium Vannamei shrimps HOSO RC 40/50 10x1 kg 20% -EC(Shrimps)	19
4150-008	DSD Vannamei Cooked PDTO 26/30 IQF 10 x 1kg 30% -VN(Shrimps)	19
4150-009	DSD Vannamei Cooked PDTO 31/40 IQF 10 x 1kg 30% -VN(Shrimps)	19
4150-010	DSD Vannamei Cooked PDTO 41/50 IQF 10 x 1kg 30% -VN(Shrimps)	20
4230-031	Bonemer Black Tiger P&D 16/20 IQF 10 x 1kg 30% -BD(Shrimps)	20
4275-024	MdM Vannamei Shrimps P&D 8/12 IQF 10 x 1kg 30%-IN(Shrimps)	20
4275-030	DSD Vannamei Shrimps P&D 71/90 IQF 10 x 1kg 25%-IN(Shrimps)	20
4275.3	Vannamei shrimps P&D 16/20 10 x 1 kg 30%-VN(Shrimps)	20
4276-002	MdM Vannamei Shrimps P&D 31/40 IQF 10 x 1kg 30%-VN(Shrimps)	20
4276-003	MdM Vannamei Shrimps P&D 13/15 IQF 10 x 1kg 30%-VN(Shrimps)	20
4276-005	MdM Vannamei Shrimps P&D 21/25 IQF 10 x 1kg 30%-VN(Shrimps)	20
4276-007	DSD Vannamei Shrimps P&D 16/20 IQF 10 x 1kg 30%-VN(Shrimps)	20
4276-009	DSD Vannamei Shrimps P&D 26/30 IQF 10 x 1kg 30%-VN(Shrimps)	21
4276-024	DSD Vannamei Shrimps P&D 51/60 IQF 10 x 1kg 25%-VN(Shrimps)	21
4430-011	Bonemer Black Tiger HLSO ezp 16/20 IQF 10 x 1kg 30% -BD(Shrimps)	21
4453-021	MdM Vannamei Shrimps HLSO ezp 16/20 IQF 10 x 1kg 30% -VN(Shrimps)	21
4460-003	Jona Vannamei shrimps HLSO ezp 16/20 10 x 1 kg 25 %-IN(Shrimps)	21
4465	JONA Vannamei Shrimps HLSO easy peel 16/20 10 x 1 kg 25%-IN(Shrimps)	21
4920-005	Jona Cooked Shrimps PUD 91/120 IQF 10 x 1kg 25% -BD(Shrimps)	21
4920-006	Jona Cooked Shrimps PUD 100/200 IQF 10 x 1kg 25% -BD(Shrimps)	21
5030-001	Nordic Cooked Pandalus 90/120 IQF 5x 1kg 20% -DK(Shrimps)	21
5032	Pandalus WR/red cooked shrimps 90/120 5 x 1000 gr IQF-DK(Shrimps)	22
5033-001	Polar Cooked Pandalus WR 90/120 1 x 5 Kg IQF-GL(Shrimps)	22
5310-001	Bonemer Breaded Butterfly Shrimp 21/25 IQF 10 x 1kg -VN(Shrimps)	22
5322-004	Wanly Breaded Torpedo Shrimps 26/30 IQF 10 x 1kg -VN(Shrimps)	22
5329-001	Isea Potato Shrimps 25g/pcs Tray 20 x 250g -VN(Shrimps)	22
5352-001	水晶虾饺 Kao Shrimp Dumplings 32pcs 10 x 800g -VN(Other)	46
5503-001	CB Snow Crab Meat Cup 6 x 1lb -ID(Crab)	23
5504-001	CB Red Snow Crab Meat Cup 6 x 1lb -ID(Crab)	23
5508-001	Jona Blue Swimming Crab 150-400g IQF 10 x 1kg 15% -LK(Crab)	23
5549.3	JONA Softshell Crabs / Cua Lot 12 pcs 10 x 1000 Gr- MM(Crab)	23
5549.7	JONA Softshell Crabs / Cua Lot 24 pcs 10 x 1000 Gr- MM(Crab)	23
5553.3	Softshell Crabs Cleaned Whale 8 pcs 10 x 1000 Gr- BD(Crab)	23
5586-001	Cooked Cutted Swamp Crab 6 x 1 kg 5% -SR(Crab)	23
5590-001	Prim7Stars West Africa Crab WR 200g-UP IQF 1 x 8kg -NG(Crab)	23
6005-001	Sealight Muslitos Breaded Surimi Crab Claws 10 x 1kg-CN(Fish)	18
6017-001	DSD Surimi crab sticks VP 20 x 500g -CN(Fish)	18
6145.6	JONA Octopus Vulgaris Clean -500g 2 per Tray 12 kg 100%-PT(Octopus)	26
6324	Cuttlefish dirty/ Sepia WR 100/300 gr 10 kg block-NL(Cuttlefish)	25
6345-001	MdM Baby Cuttlefish Cleaned 60+ WR 10 x 1kg 20% -VN(Cuttlefish)	25
6352-001	Illex Squid Tentacles 90-120g IQF 1 x 6kg 25% -ES(Squid)	24
6353-001	Giant Squid Tentacles Tray 12 x 800g 100% NW -PT(Squid)	24
6354	Giant Squid Tentacles 20-60g half cut 5 leg 20x500g 25%-CN(Squid)	24
6415-001	Jona Illex Squid Tubes U5 IQF 10 x 1 kg 30% -CN(Squid)	24

6435-001	Illex Squid WR 400-600g Block 1 x 5kg 20% -TW(Squid)	24
6439-001	Jona Ceylon Loligo WR 100-300g IQF 10 x 1kg 15% -LK(Squid)	24
6615-002	California Squid WR 9-11cm Block 12 x 1kg-US(Squid)	24
6810-001	DSD Seafood Mix Mussel IQF 10 x 1kg 20% -ES(Shellfish)	27
6811-001	DSD Seafood Mix Surimi Tray 20 x 500g 20% -CN(Shellfish)	27
6811-002	DSD Seafood Mix Surimi Tray 10 x 1kg 20% -CN(Shellfish)	27
6849-003	Jona Squid Rings Raw 4-8cm IQF 10 x 1kg 30% -CN(Squid)	24
6870-002	Jona Battered Squidrings 40/60 IQF 16 x 500g -ES(Squid)	24
7010-001	DSD Cooked White Clam WR 40/60 VP 10 x 1kg 10% -VN(Shellfish)	27
7035-002	DSD Cooked Yellow Clam Meat 1000-UP IQF 10 x 1kg 20% -VN(Shellfish)	27
7118-003	Nordic Halfshell Mussels Medium 10 x 800g -NZ(Shellfish)	27
7135-004	Jona Musselmeat cooked 100-200 IQF 10 x 1kg 10% -CL(Shellfish)	27
7150	Mussels breaded and prefried 5 x 1 kilo AA 60 %-NL(Fish)	18
7314-002	Delimare Frog Legs 8/12 IWP 12 x 800g 100% NW -VN(Other)	46
7409	Frozen Periwinkle 50 x 200 Gr Bag-CM(Other)	46
7409.1	Frozen Periwinkle 25 x 200 Gr Bag-CM(Other)	46
7415	Frozen African Snails 70 x 227 Gr Bag-CM(Other)	46
7417	Frozen African Snails / Jumbo Snails 24 x 907 Gr Bag-CM(Other)	46
8000-TEM	BBD 13/10/2024 Codfish Crumble140-160 5 kg-NL(Fish)	18
P		
8002-001	Jimmy Fish Fries Pollock IQF 5 x 1kg -NL(Fish)	18
8003-001	Van der Lee Kibbeling/Cod nuggets IQF 5 x 1kg -NL(Fish)	18
8016.1	Fish Nuggets Bonemer 12 x 800 gr - NL(Fish)	18
8020-001	Ibercook Panko Prawns Garlic/Parsley IQF 4 x 1kg -ES(Snacks)	43
8040-001	Kokolo Cleaned Hen Halal IWP 12 x 900g -NL(Poultry)	30
8040-003	Kokolo Cleaned Hen Halal IWP 10 x 1100g -NL(Poultry)	30
8080	Kokolo Henlegs Halal A grade (Strong Chicken) 10 kg-NL(Poultry)	30
8091-001	Peking Duck Heads 10 x 1kg -PT(Poultry)	30
8092	鸭舌 (带须) Duck Tongue XL 6 x 1000 grs -PT(Poultry)	30
8092.2	鸭胗 Duck Gizzards 10x1kg -PT(Poultry)	30
8093-001	Peking Duck Wings 2 joints 10 x 1kg -PT(Poultry)	30
8094	鸭脖 Cleaned Duck Necks 10 x 1000 grs -PT(Poultry)	30
8094-001	Peking Duck Necks 10 x 1kg -PT(Poultry)	30
8095-001	Peking Duck Intestine 8 x 1kg -PT(Poultry)	31
8096-002	Duck Griller Without Organs 6 x 1800g -PT(Poultry)	31
8096-004	Duck Griller Without Organs 6 x 2000g -PT(Poultry)	31
8096-005	Duck Griller Without Organs 6 x 2200g -PT(Poultry)	31
8096-007	Duck Griller Without Organs 6 x 2600g -PT(Poultry)	31
8100-002	D ng F ng Boneless Roasted Duck Halves 16pcs VP 1 x 10kg -CN(Poultry)	31
8109-001	Peking Duck Feet 10 x 1kg -PT(Poultry)	31
8142-001	King Strong Chickenleg Cut IQF 10 x 1kg -NL(Poultry)	31
8210	Retailpacked Turkey Gizzard 10 x 1 kg -FR(Poultry)	31
8217F	Turkey Wings Female 3 joint 1 x 10 kg-GB(Poultry)	32
8224-001	King Turkey Wings Midpart Cut IQF 10 x 1kg -DE(Poultry)	32
8241-001	Quaility Cleaned Quails XL 170-190g Tray 9 x ~720g -ES(Poultry)	32
8260	Smoked Turkey Wings Halal (Midparts) cleaned 5 Kg-FR(Poultry)	32
8310.1	Beef Aorta 冰冻牛黄喉 16 x 800 gr IVP-ES(Meat)	28

8311-001	Afribest Cow Veins VP 20 x 500g -NL(Meat)	28
8312B	Cow leg cut Afribest 10 x 1 kg -NL(Meat)	28
8313	切条千层肚 Vivasie Cut Cow Stomach white 30x200gr Tray-ES(Meat)	28
8320-001	Afribest Mask Cow Skin Halal 8 x 1kg -NL(Meat)	28
8327B	Cow Stomach / Abodi Afribest 10 x 1 kilo -NL(Meat)	28
8327I	NIDOLIN Cow Stomach/Abodi 8 x 1kg- IE(Meat)	28
8328-002	Vivasie Beef Tripe Strips Naturel 切条黑毛肚 30x200gr Tray-ES(Meat)	28
8329	金钱肚 Beef Honeycomb / Tripes 16 x 800gr-ES(Meat)	28
8330	牛仔筋 Cowtendon / Cartilla Vacono / Gân bò 16 x 800 gr-ES(Meat)	29
8330.1	牛板筋 Cowtendon / Backstrap / Gân bò 16 x 1 kg-ES(Meat)	29
8331	牛杂 Beef Haslet Partymix 16 x 1 kilo-ES(Meat)	29
8336	牛百叶 VivAsie Cowtripes 16 x 800 gr-ES(Meat)	29
8340N	Cow Frozen Cut Afribest 10 x 1 kilo-NL(Meat)	29
8391-001	Vivasie Cut Pork Feet vacuum 16 x 1kg -ES(Meat)	29
8425-001		